



# Vegetation Management Radnor Township Board of Commissioners

**Jeff Watson, Senior  
Vegetation Program  
Manager  
June 24, 2019**

## Overview

- ✓ PECO provides reliable electric supply to its customers by performing a combination of preventive and corrective vegetation maintenance around its electric equipment.
- ✓ 5-year cyclic maintenance work is enhanced with customer responsive, data-driven and priority tree removal programs.

## Why Vegetation Management Matters

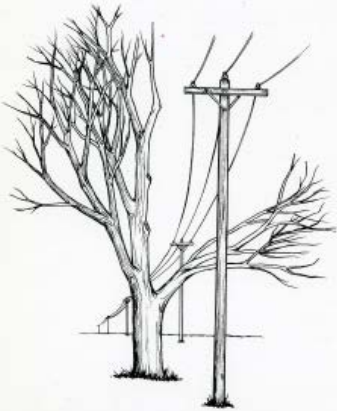
- ✓ Safely maintaining electric equipment is paramount.
- ✓ Roughly one-third of all of PECO outages are vegetation related.
- ✓ The wrong tree species planted in a poor location today can cause a big customer issue later.

# How PECO Performs Vegetation Management

# PECO Utilizes National Standards for Vegetation Management

## Best Management Practices

### UTILITY PRUNING OF TREES



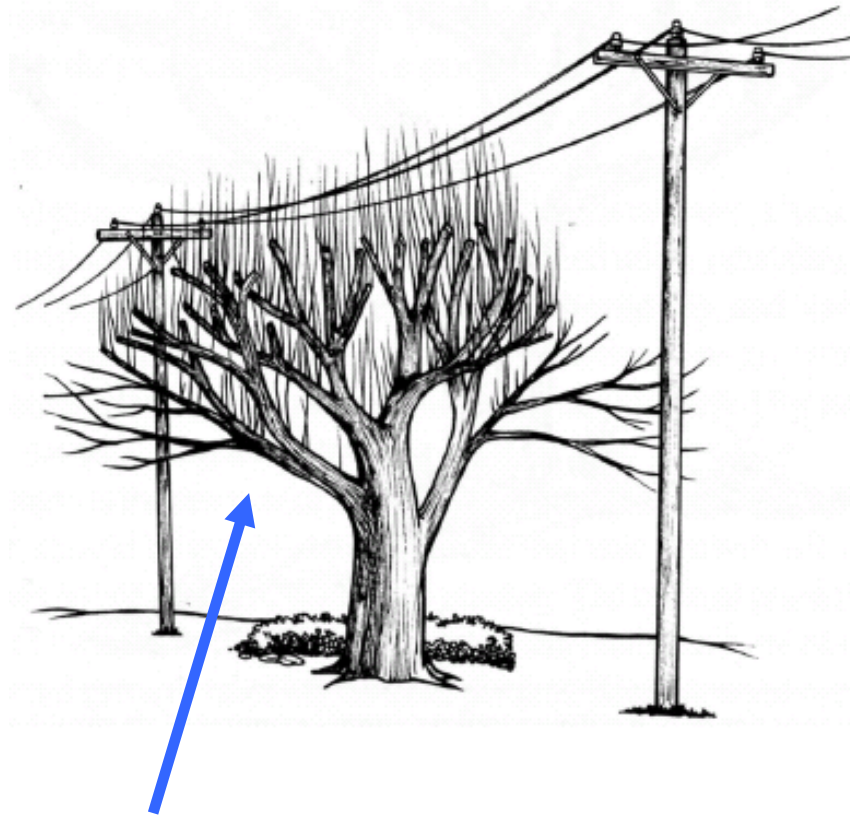
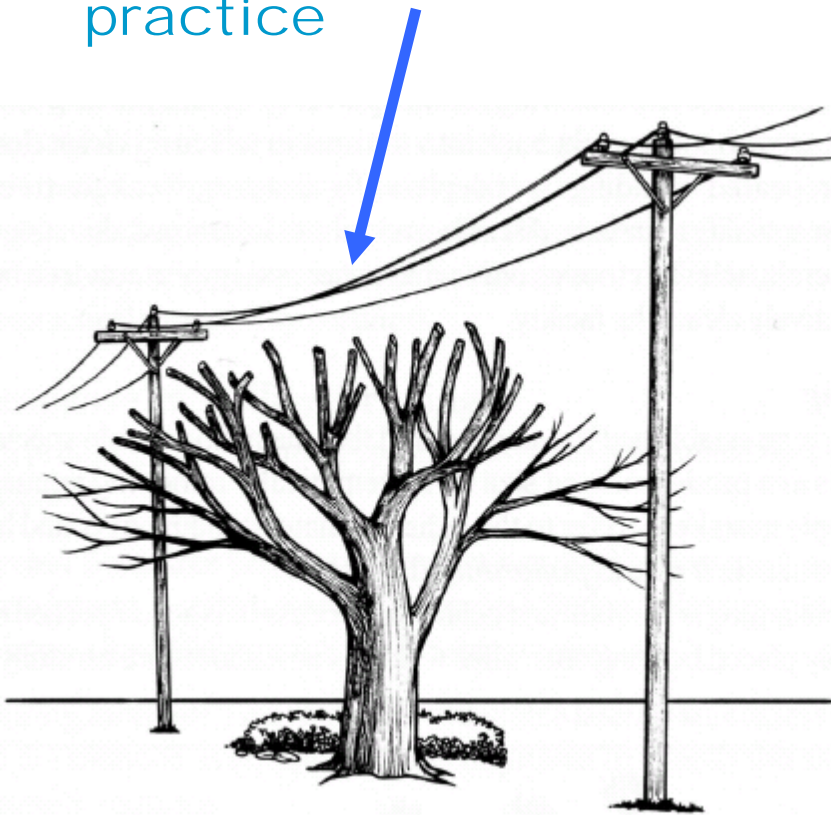
Special companion publication to the ANSI A300 Part 1, Tree, Shrub, and Other Woody Plant Maintenance—Standard Practices, Pruning

ANSI A300, Part 1

This guides the growth of the tree safely away from the wires



Rounding over, topping,  
or stubbing severely  
damages trees and is  
now a discredited  
practice



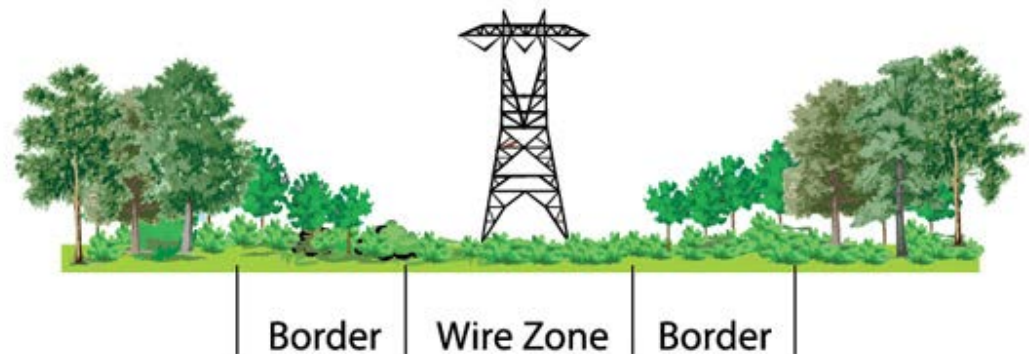
Many trees respond to  
rounding over with a flush  
of fast-growing sprouts  
directly back towards the  
electric facilities

# Integrated Vegetation Management

- ✓ IVM techniques include tree removals, tree pruning, mechanical clearing & herbicide applications.
- ✓ Industry Best Management Practices encourage the development of natural and compatible plants in the rights-of-way.
- ✓ Select portions of rights-of-way are being planted with native meadows and shrubs to enhance their wildlife and ecological value.



ANSI A300, Part 7

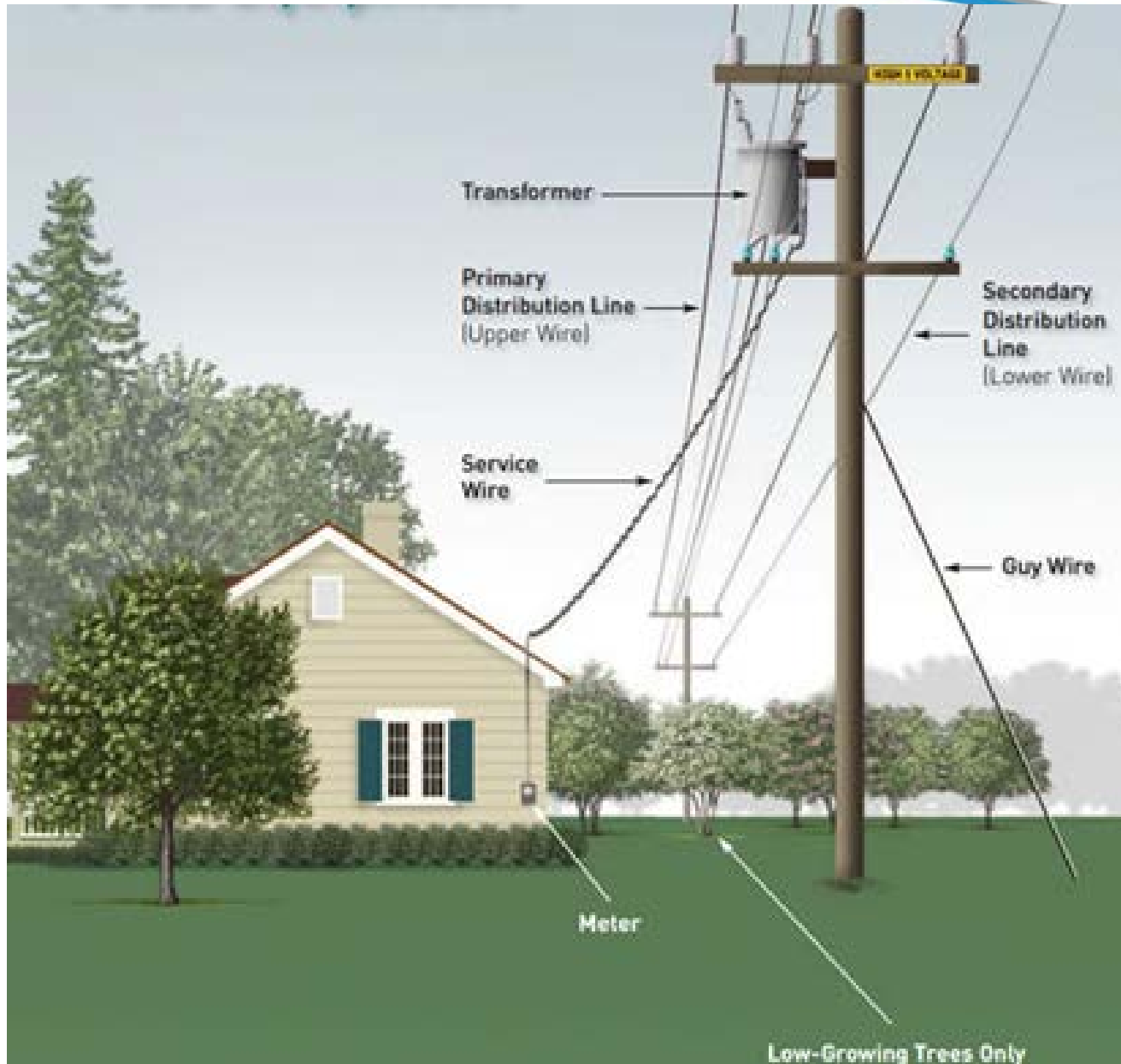


## Native Grass and Wildflower Meadows

- ✓ Improved Electric Service Reliability
- ✓ Reduced Greenhouse Gas Emissions
- ✓ Improved Storm Water Management
- ✓ Improved Wildlife Habitat







## Customer Responsibility

- ✓ PECO Vegetation Mgmt maintains the primary and secondary aerial supply lines “pole to pole.”
  
- ✓ Service wires (“pole to house”) are customer responsibility
  - PECO will remove broken limbs from service wires upon request
  - Wires can be de-energized or dropped by PECO for customers’ contractor to safely perform work
  - **PECO.com** Service Request – Make Work Site Safe



SIGN IN



SEARCH SITE

GO

(EMAIL ADDRESS)

PASSWORD

SIGN IN

ABOUT US

MY ACCOUNT

CUSTOMER SERVICE

SAVINGS

ENVIRONMENT

COMMUNITY

SAFETY & EDUCATION

Home > Customer Service > Service Request > Make Work Site Safe

Service Request

Emergency

Start, Stop or Transfer

Construction or Remodeling

Gas Application

• Make Work Site Safe

Call Before You Dig

Trees & Powerlines

Street Light Maintenance

Mobile

Billing & Payment

Rates & Pricing

Customer Choice

Assistance Programs

Claims & Forms

# Make your work site safe

If work is to be performed near overhead lines, the lines need to be de-energized and grounded, or other protective measures provided before work is started. Such precautions are in place to prevent contact with lines and to ensure your safety.

*\* denotes required field*

## Request to Work Near Energized Facilities

Name: \*  ?

Email Address: \*

Phone: \*  -  -  ext.

Work Location Address: \*

City: \*

State: \*



# TREE CARE INDUSTRY ASSOCIATION

Advancing tree care businesses since 1938

[BUSINESS](#) [SAFETY](#) [EVENTS](#) [SHOP](#) [TCIAF](#) [MEMBERSHIP](#) [PUBLICATIONS](#) [TRAINING](#)



[Home](#) | [Log on](#) | [Create account](#) | [Contact us](#) | [Cart](#)

[Join or Renew TCIA](#)

[Directory](#)

[Events](#)

[Store](#)

[TCIAF Donate](#)

[My Account](#)

## Find Qualified Tree Care

Enter your zip code below to find a TCIA Member company near you.

Zip Code:

[...More search options](#)

Company Name:

State/Province:

Keywords:

Country:

Show results for:

- All Tree Care Services
- Accredited Tree Care Services
- Accredited Utility Contractors

## Debris Removal

- ✓ Preventive veg maintenance (5-year cycle on all primary electric supply): all debris removed
- ✓ Corrective veg maintenance (customer response programs): wood is left on site, debris/brush is chipped and removed
- ✓ For tree removals, stumps are cut but PECO does not grind stumps

## Storm/Emergency Clean Up Policy

- ✓ Uprooted trees and broken limbs can damage electric lines and cause power outages. PECO clears damaged trees or vegetation from our equipment to help ensure reliable service.
- ✓ The company does NOT remove debris caused by emergency or storm-related restoration work.
- ✓ The owner of the tree is responsible for debris removal.
- ✓ Refer questions to PECO Vegetation Mgmt:  
800-311-6345 ext. 915

# Nobody Planned for this 100 years ago



Tree and wire conflicts occur when large-growing trees are planted under wires





## Low-growing power line compatible tree species

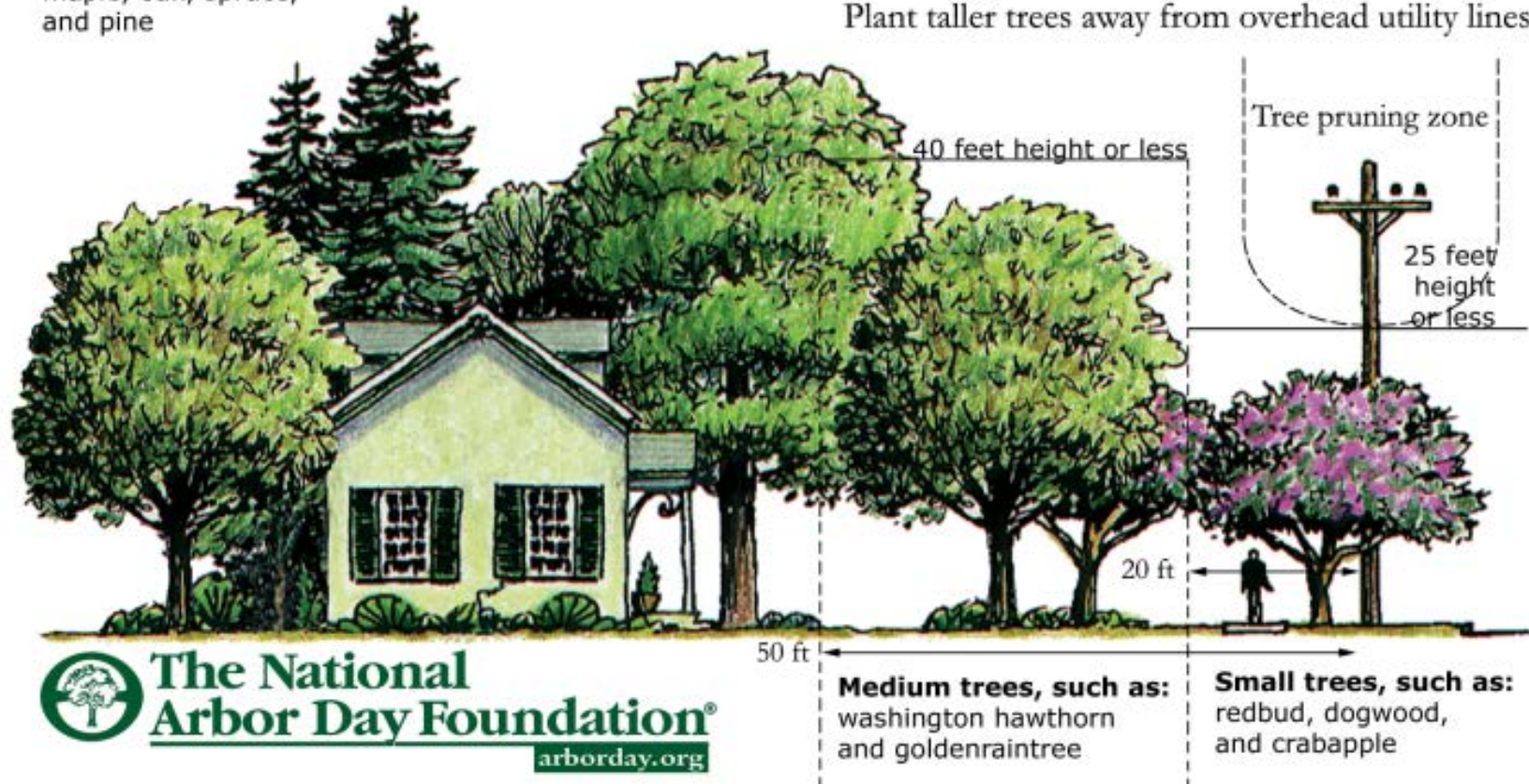


# PECO recommends "*Plant the Right Tree in the Right Place*" to avoid tree & wire conflicts

**Tall trees, such as:**  
maple, oak, spruce,  
and pine

## Plant the right tree in the right place

Plant taller trees away from overhead utility lines



# Compatible Trees @PECO.com

PECO recommends the following trees as compatible for planting under electric distribution lines:

Acer buergeranum (Trident maple)  
Acer campestre (Hedge maple)  
Acer ginnala (Amur maple)  
Acer tataricum (Tatarian maple)  
Acer griseum (Paperbark maple)  
Amelanchier spp. (Serviceberry species)  
Carpinus caroliniana (American hornbeam)  
Cercis canadensis (Red bud)  
Cornus florida (Flowering dogwood)  
Cornus kousa (Kousa dogwood)  
Cornus mas (Cornelian dogwood)  
Crataegus crusgalli var. inermis (Thornless  
cockspur hawthorn)  
Crataegus laevigata "Superba" (English hawthorn)  
Crataegus x lavalleyi (Lavalle hawthorn)

Crataegus phaenopyrum (Washington hawthorn)  
Crataegus viridis "Winter King" (Winter king  
hawthorn)  
Malus "Adirondack" (Adirondack crab apple)  
Malus "Prairifire" (Prairifire crab apple)  
Malus "Professor Sprenger" (Professor Sprenger  
crab apple)  
Prunus serrulata "Shirotae" (Mt. Fuji cherry)  
Prunus subhirtilla "Autumnalis" (Autumn flowering  
cherry)  
Prunus virginiana (Chokecherry)  
Prunus virginiana "Schubert" (Canada red  
chokecherry)  
Syringa reticulata "Ivory Silk" (Japanese tree lilac)  
Syringa reticulata "Summer Snow" (Japanese  
tree lilac)

## Summary

- ✓ To provide safe and reliable electric service PECO must keep wires clear of vegetation conflict.
  - National Standards and Industry BMP
  - Customer Responsibility/Safety
  - Make Work Site Safe
  - Debris Removal
  - Storm/Emergency Clean Up Policy
  - Tree Species Compatible with Utility Wires