

# Radnor Township

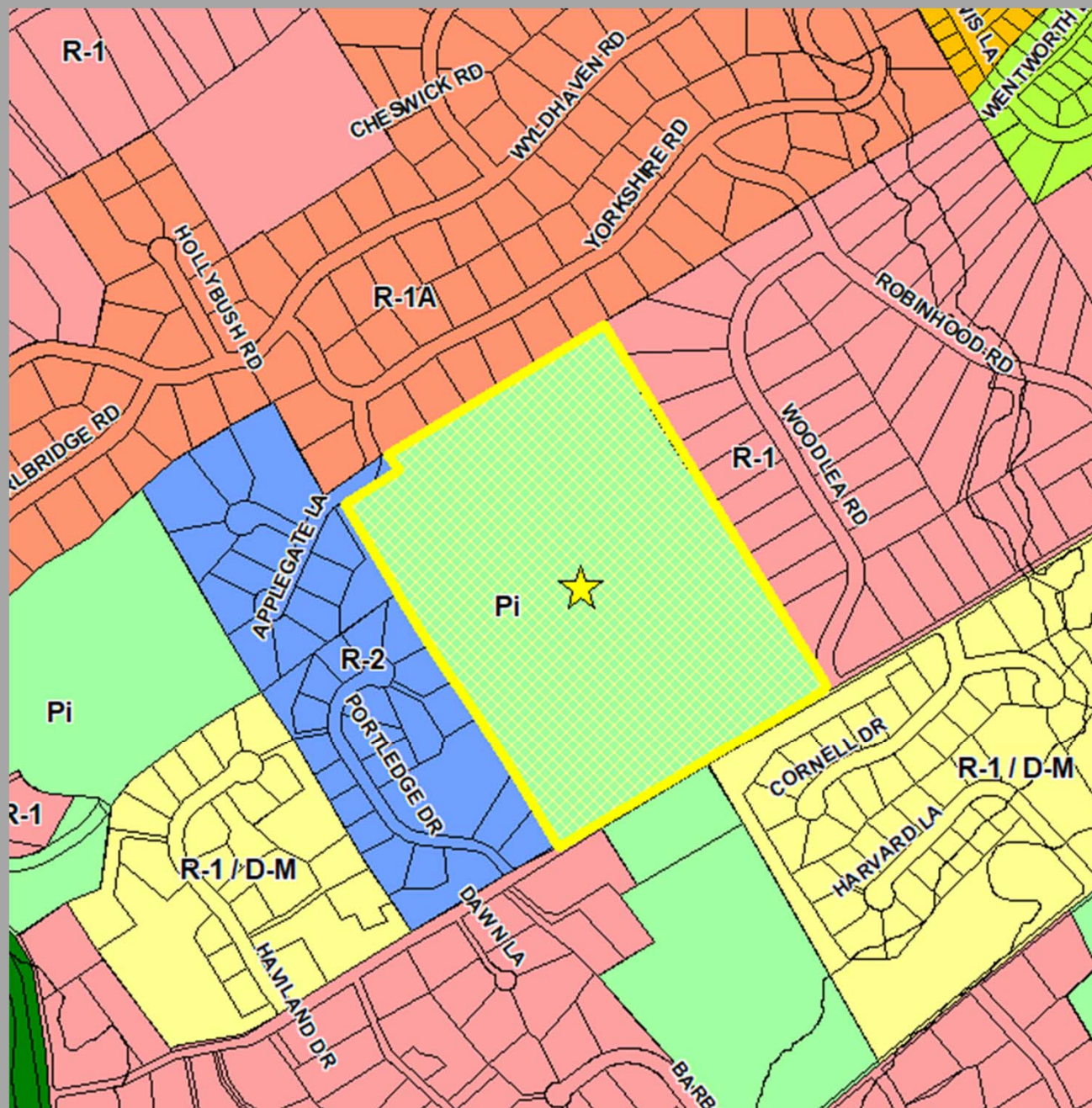


## Typical Development Process

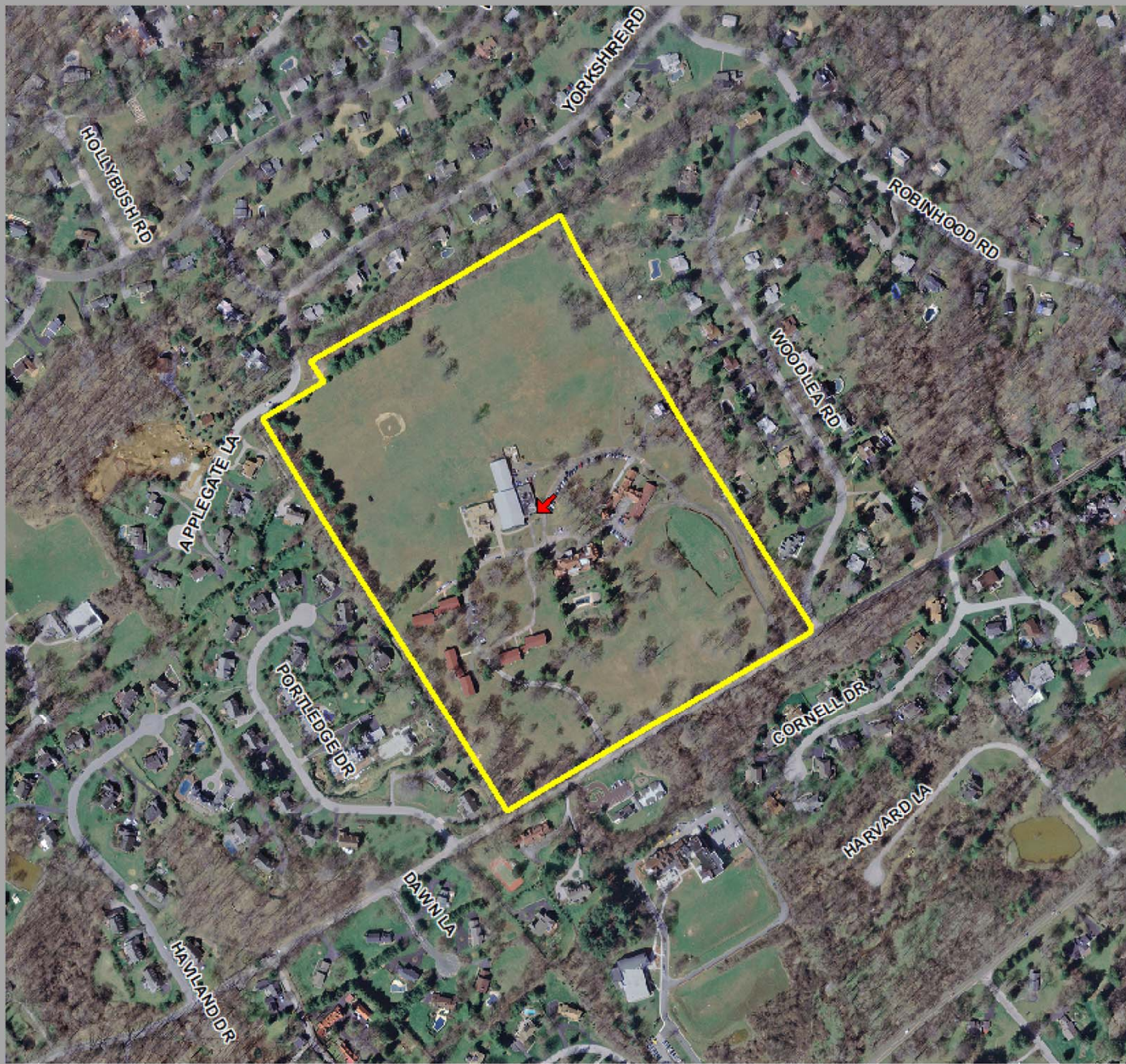
# 452 S. Roberts Road

- Current Zoning – Planned Institution (PI)
  - Uses Permitted By-Right:
    - College, private or parochial elementary or secondary school or other educational institution for academic instruction
    - Convent, monastery, church or similar religious institution
    - Student infirmary, including rectory or parish house, provided that a rectory or parish house contains not more than one dwelling unit, not to include a business or trade school, dance studio or similar use.
  - Uses Permitted by Special Exception:
    - Any institutional use similar to a use specifically permitted above, such as:
      - A museum
      - An institution or home for children, the aged, the indigent or the handicapped
      - Medical or health center
      - Convalescent home, nursing home or similar health facility

# 452 S. Roberts Road



# 452 S. Roberts Road



# DEVELOPMENT PROCESS

- ZONING PETITION
- CONDITIONAL USE APPROVAL
- LAND DEVELOPMENT APPROVAL
- GRADING PERMIT APPROVAL
- BUILDING PERMIT APPROVAL
- OUTSIDE AGENCY APPROVAL

# TYPICAL DEVELOPMENT TIMELINE

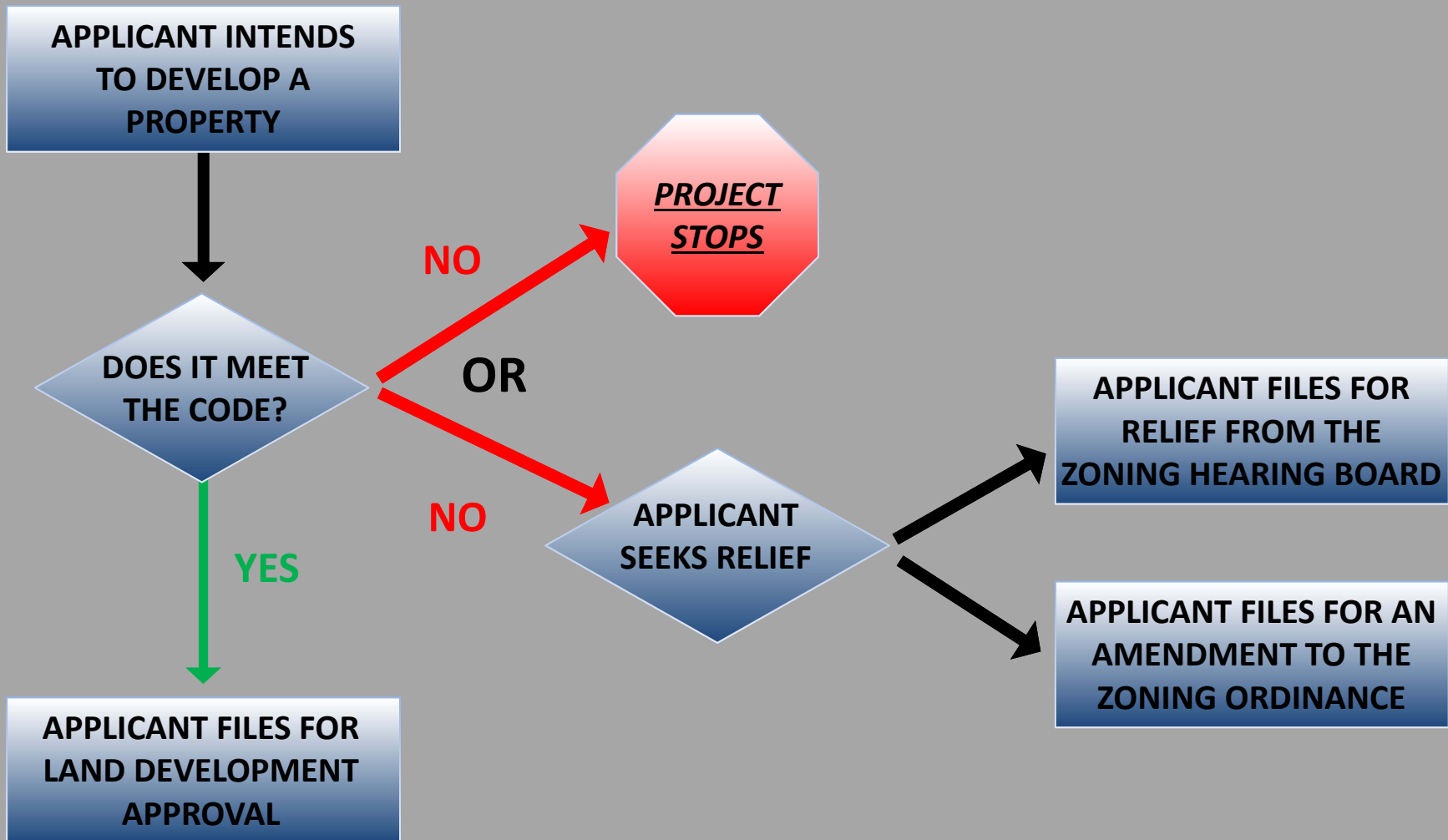
## PROCESS

## TYPICAL TIMELINE



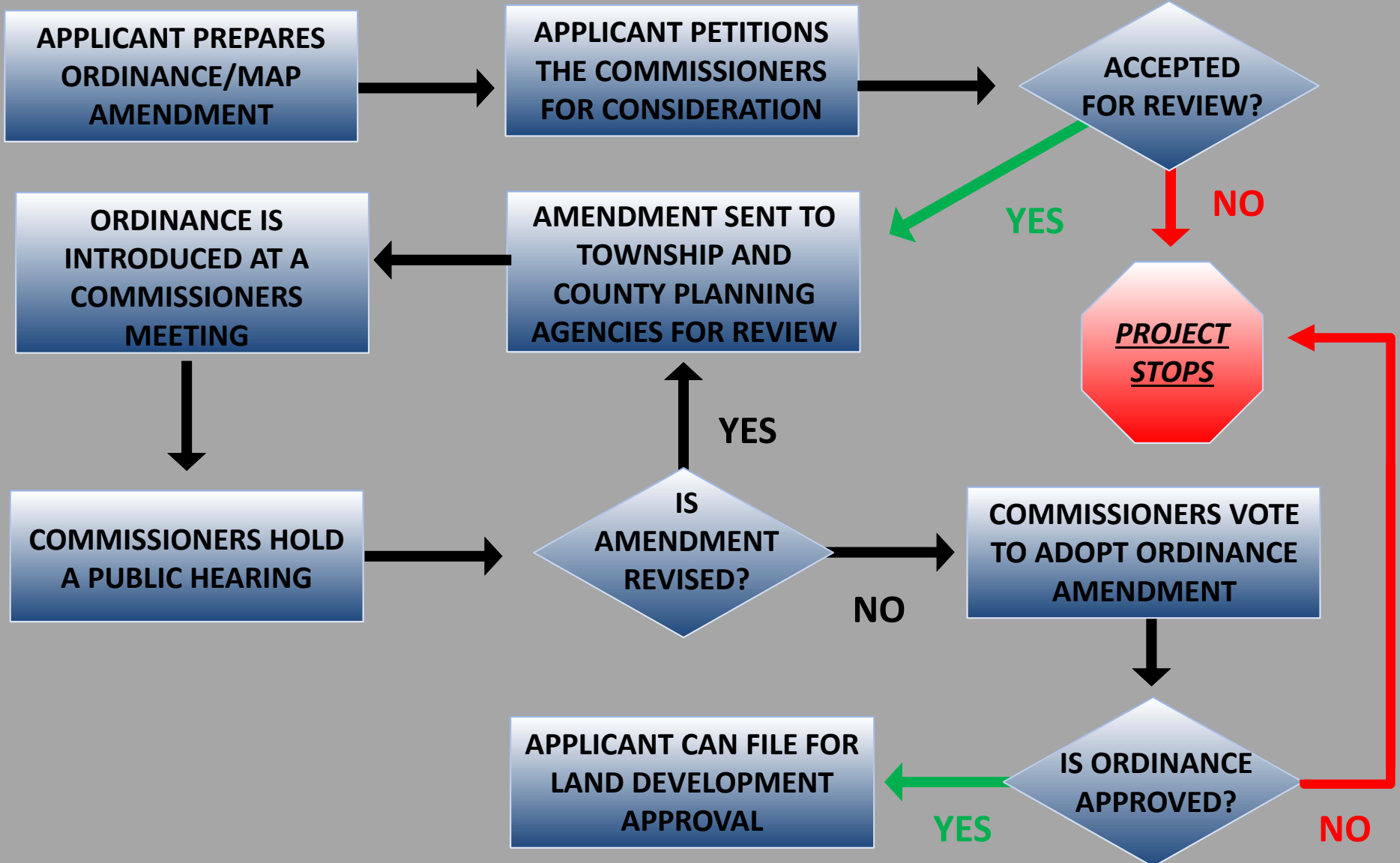
# INITIAL PROJECT SUBMISSION

START



# ZONING ORDINANCE AMENDMENT PROCESS 101

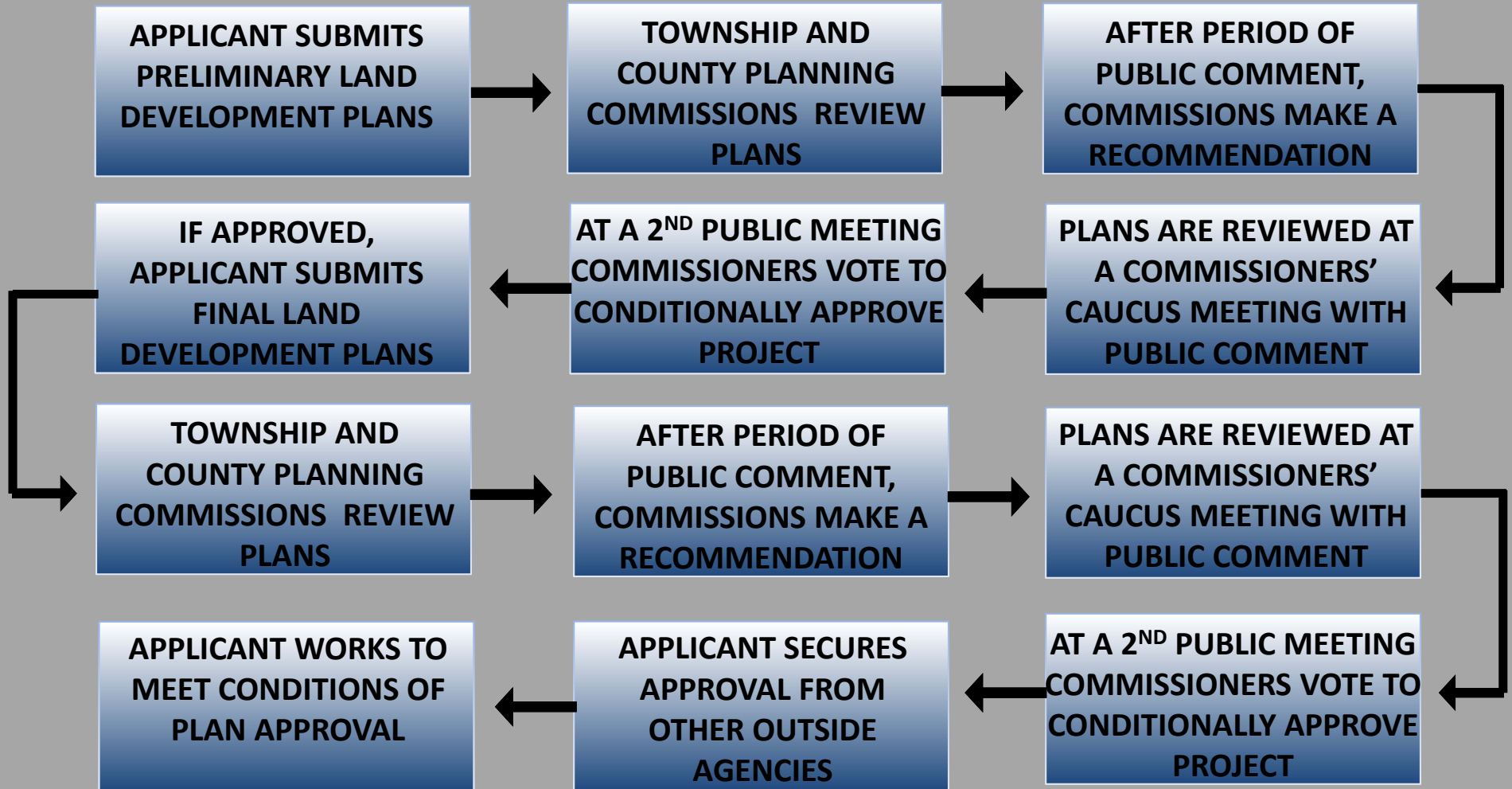
**START**





# LAND DEVELOPMENT PROCESS 101

**START**



# Radnor Township



## Typical Development Process