



# RADNOR DAY CAMP WELCOME PACKET 2022



***Summer is here - welcome to Radnor Day Camp 2022! We're excited to share important information with you in order to help prepare you and your camper for a fun, safe, and successful summer!***

**RDC Dates 2022: June 27 - August 5 (no camp July 4)**

**Monday-Friday Full-Day 9:00 AM to 3:00 PM**

**Half-Day 9:00 AM to 12:30 PM**

**Camp Cell: 610-955-4179 (available the first day of camp)**

**Camp Email: [radnortownshipdaycamp@gmail.com](mailto:radnortownshipdaycamp@gmail.com)**

**Camp Location: Radnor Elementary School, 20 Matsonford Road, Radnor, PA**

**Radnor Township Parks & Recreation Department:**

**610-688-5600 | 301 Iven Avenue, Wayne PA | [recreation@radnor.org](mailto:recreation@radnor.org)**

***We hope you find the enclosed information to be helpful as you prepare for a memorable summer experience!***



**MOIRA MULRONEY, ESQ.** *Ward 5*  
*President*

**JACK LARKIN, ESQ.** *Ward 1*  
*Vice President*

**MAGGY MYERS** *Ward 2*

**ANNAMARIE JONES** *Ward 3*

**LISA BOROWSKI** *Ward 4*

**JAKE ABEL** *Ward 6*

**SEAN FARHY** *Ward 7*



**RADNOR TOWNSHIP**  
**301 IVEN AVENUE**  
**WAYNE, PENNSYLVANIA 19087-5297**

**Phone (610) 688-5600**  
**Fax (610) 971-0450**  
**www.radnor.com**

**WILLIAM M. WHITE**  
*Township Manager*  
*Township Secretary*

**JOHN B. RICE, ESQ.**  
*Solicitor*

**KEN FROHLICH**  
*Treasurer*

June 16, 2022

Dear Radnor Day Camp Parents/Guardians,

Welcome to Radnor Day Camp 2022! Thank you for choosing to send your camper to RDC - we know you have many camp choices, but truly believe you have chosen the best! It's amazing that we are celebrating 81 years of a great Radnor tradition with Radnor Day Camp and we have a summer of fun activities planned for your campers!

This year, we would like to welcome our new Director, Jean Evans to Radnor Day Camp. Jean worked as the Director of our Radnor Preschool Camp in 2016 and we are very excited to have her back! Jean has an extensive background in working with children with a degree in Elementary/Early Childhood Education from Temple University. She has also completed her Master of Education with K-12 Principal Certification from Cabrini University. Jean is looking forward to bringing her high energy and fresh new perspective to Radnor Day Camp with integrity and leadership to facilitate a positive camp environment that meets the diverse needs of our campers.

The staff at Radnor Day Camp are honored to work with children year-round, dedicating their lives to kids through careers in education, recreational activities, and participation in a diverse array of youth-centered outlets. We take special satisfaction in bringing unforgettable memories to the campers who attend RDC each summer. Our goal each summer is to create an environment in which each camper feels safe enough to learn, grow, and be happy. We are proud of our solid reputation as a camp that meets the emotional and physical needs of its campers. Offering an array of activities such as arts and crafts, sports, performing arts, and swimming along with fun traditions like Camp Olympics, Performance and Art Show, and the Carnival, our campers enjoy a great opportunity to interact with others, have fun, and make new discoveries! This year we are excited that camp will again take place at Radnor Elementary School - a facility that has a lot to offer. Campers will also be bused to Club La Maison once again this year for swimming 1 to 2 times per week.

Attached are the essential materials to help you this summer—Camp Frequently Asked Questions & Information Flyer, Camper Code of Conduct, Trip & Event Calendar, Trip & Event Policies & Procedures, Radnor Day Camp Site Map & Floor Plan at Radnor Elementary School, Swim Program Information Sheet, and a Bus Stop Schedule (if you have elected to have transportation provided). Please take the time to read through these materials closely. Throughout the summer, additional letters and information will be shared electronically by email and on our website: [www.radnor.com/RDC](http://www.radnor.com/RDC). If you require paper correspondences, please let us know right away.

We are all very excited to kick off Radnor Day Camp 2022! Please remember if you have any questions or concerns throughout the summer, you can contact the Radnor Township Parks & Recreation Department at 610-688-5600. Starting the first day of camp, you can also reach the RDC Director by mobile phone at 610-955-4179 from 8:30 AM to 4:00 PM Monday to Friday. You can also send an email to [radnortownshipdaycamp@gmail.com](mailto:radnortownshipdaycamp@gmail.com) at any time.

On behalf of all of us here at Radnor Day Camp, we are looking forward to working together to make this summer fabulous for you and your children! We sincerely appreciate your consideration in making Radnor Day Camp your choice!

**Tammy Cohen**  
Director of  
Parks & Recreation

**Heather DiCanzio TK**  
Recreation Program  
Supervisor

**Tracey Krum**  
Recreation Program  
Coordinator

**Jean Evans TK**  
Radnor Day Camp  
Director

# Radnor Township Parks & Recreation Department

## Radnor Day Camp – Camper Code of Conduct *revised June 2022*

Radnor Day Camp strives to promote a positive camp atmosphere where children can develop, learn, be safe and have fun. Respect and cooperation of other campers, staff members, equipment, and the facility are imperative to ensure the success of RDC. This includes camper conduct while riding camp buses, at designated camp bus stops, and at other destinations and field trips as applicable during summer camp.

Guidelines for camper behavior, including policies and procedures, are necessary for maintaining an orderly and respectful environment. Disorderly conduct of any kind will not be tolerated anywhere at camp. Disciplinary action will be taken at the discretion of the RDC/Radnor Recreation staff members, will be practical, and will be communicated with parents or guardians. Depending on the severity that is determined, the camper may be dismissed from camp for the remainder of the summer and/or for subsequent summers (length dependent on severity of misconduct and outcome of investigation). Refunds will not be issued if this occurs.

*In order to communicate acceptable behaviors and disciplinary procedures, we ask that you carefully read below and explain to your camper the responsibilities for which they will be accountable this summer.* These responsibilities and consequences will be referred to if a situation occurs this summer that requires any form of disciplinary action.

### **Zero Tolerance:**

**Radnor Day Camp has Zero-Tolerance for the following behaviors and misconduct:**

- Bringing any type of weapon to camp.
- Possession, distribution, or use of drugs, alcohol, cigarettes, electronic cigarettes of any kind, or other illegal substances.
- Bringing indecent material in any form to camp.
- Harmful threats that require immediate response and/or are determined to pose an ongoing safety concern at camp.

### **General Camper Responsibilities:**

**Camper Responsibilities include, but are not limited to:**

- Using appropriate language at all times.
- Cooperating with staff, following directions, and maintaining a positive attitude.
- Respecting fellow campers, staff, equipment, and facilities.
- Participating in programs and activities and staying with the assigned group and staff at all times.
- Following all rules and safety guidelines set and communicated by Radnor Day Camp staff members.

**While on the bus traveling to and from camp, camper responsibilities include, but are not limited to:**

- Remaining in your seat while the bus is moving, with no standing in or on seats and keeping body parts inside at all times.
- Cleaning up all trash properly before leaving the bus.
- Using appropriate language and volume when talking with others.
- Following all rules and safety guidelines set and communicated by the Bus Driver and Radnor Day Camp staff members.

### **General Consequences:**

**The following general consequences will be followed by Radnor Day Camp staff members for failure to adhere to Camper**

**Responsibilities - Steps and reprimands may vary depending on severity of the situation:**

1. Verbal warning and reminder of future consequences if the behavior continues.
2. Removal from an activity.
3. Removal from an activity and/or contact with parents/guardians.
4. Informational Report to parent/guardian and/or Formal Meeting solicited with parent/guardian.
5. Suspension from camp and/or camp bus (length dependent upon severity of behavior and outcome of investigation)
6. Dismissal from camp and/or camp bus for the remainder of the summer and/or subsequent summers (length dependent upon severity of misconduct and outcome of investigation).

Behaviors that may result in disciplinary action include, *but are not limited to:*

- Threats of any kind.
- Vulgar, disrespectful, inappropriate language or behavior harassment or bullying.
- Kicking, pushing, hitting, spitting, rough play, or fighting.
- Vandalism or destruction of equipment, facilities, or personal property.
- Misbehavior on camp buses and/or at bus stops.
- Misuse of social media.

# *Additional Information Regarding Threats at Camp*

---

Disciplinary action will be taken at the discretion of the RDC/Radnor Recreation staff members, will be practical, and will be communicated with parents or guardians. *This action includes consequences for campers who make threats of any kind - verbal, written, or implied, and whether intended in jest or with malicious intent to harm. In order to communicate acceptable behaviors and disciplinary procedures, we ask that you carefully read below and explain to your camper the responsibilities for which they will be accountable this summer. These responsibilities and consequences will be referred to if a situation occurs this summer that requires any form of disciplinary action related to threats made at camp.*

## **Camper Threats May Consist of the Following:**

- Making a verbal threat towards a fellow camper, staff member, facility, or in general by making a statement such as:
  - “I will kill you”
  - “You should die”
  - “I will bomb the camp”
  - Any verbal statement that indicates threat or intent to harm someone or something
- Making a non-verbal threat towards a fellow camper, staff member, facility, or in general by:
  - Making an aggressive gesture, such as using your body parts to indicate a punch, pound, elbow or kick
  - Making an aggressive gesture using your hands and fingers to make the shape and action of shooting a gun or weapon
  - Making any gesture to indicate a violent act
- Writing/Drawing/Scribing in any way that depicts threatening or violent situations
- Any other discerning disrespectful, harmful, adverse or questionable behavior that conveys an atmosphere of threat or harm.

\*Situations involving threats made via social media will also be taken seriously and investigated thoroughly.

\*Campers making a threat towards oneself, in any way, either directly or indirectly, will result in further investigative action by camp staff and potentially by other professional authorities. Communication will take place with parents/guardians on these types of behaviors.

## **Consequences:**

***Malicious, harmful situations will result in IMMEDIATE ACTION and camp staff will contact 9-1-1 or summon the assistance of local emergency responders including the Radnor Police Department or Radnor Fire Department/EMS.***

If a camper performs or displays any of the above behaviors, or displays a questionable attitude or behavior that is worthy of further investigation and/or action, but not IMMEDIATE ACTION by way of 9-1-1 or summoning emergency responders, the following sequence of events will occur at the discretion of the camp staff:

1. Removal from an activity.
2. Verbal notice to the camper from the staff member regarding the witnessed and alleged statement, act, or behavior and that further action will/is being taken.
3. Contact made with parent/guardian regarding the situation and/or request for formal meeting with parent/guardian.
4. Suspension from camp (length dependent upon severity of misconduct and outcome of investigation).
5. Dismissal from camp for the remainder of the summer and/or for subsequent summers (length dependent upon severity of misconduct and outcome of investigation).

*If you have questions about this or any other policy set forth by Radnor Day Camp, please do not hesitate to contact the Radnor Township Parks & Recreation Department at 610-688-5600, x 141.*





# Radnor Day Camp FAQ's 2022

## How do I contact Radnor Day Camp?

- Radnor Day Camp cellular phone: 610-955-4179—Available June 27th to August 5th from 8:30 AM to 4:00 PM
- Radnor Day Camp email address: [radnortownshipdaycamp@gmail.com](mailto:radnortownshipdaycamp@gmail.com)—Available June 27th to August 5th
- Radnor Township Parks & Recreation Department: 610-688-5600 or [recreation@radnor.org](mailto:recreation@radnor.org)
- When contacting Radnor Day Camp over the summer please email both [radnortownshipdaycamp@gmail.com](mailto:radnortownshipdaycamp@gmail.com) and [recreation@radnor.org](mailto:recreation@radnor.org).

## Where is the Camp Office located and where should I enter the building if I need to access the Office?

- The Camp Office is located in Room 24. All visits to camp will require ringing the doorbell to enter (at Gymnasium entrance), or calling the camp cell phone, 610-955-4179. As an added safety measure, we will be keeping all external doors locked at all times.

## What if I have requested bus transportation?

- When you register for Radnor Day Camp, there is a list of bus stop locations located throughout Radnor Township. Please see our Radnor Summer Day Camp Daily Bus Schedule in the Welcome Packet for times and details of all bus stops for this year.
- Buses will be identified according to color and letter. Our camp uses Radnor Township School District buses for transportation.

## Where, when & how do I drop off/pick up my camper(s)?

- Daily camper drop off will occur at 9:00 AM. Pick-up will occur for Full-day campers at 3:00 PM. Half-day campers will be picked up at 12:30 PM.
- Daily campers pick-up/drop-off will take place at the Gymnasium entrance to Radnor Elementary School, in the lower bus loop near the playgrounds. Please follow the signs at the school while you are there.
- Families will be provided with a camper identification card in which they are asked to display when picking up their camper.
- Any unexpected weekly changes to a camper's arrival or departure time needs to be communicated by the parent/guardian via a written notice to the RDC Director.
- If you are dropping off a late camper/picking up a camper early, park in the parking spots along the bus loop and enter the building by the Gymnasium; walk your camper to the camp office/pick your camper up at the camp office.

## What are the health & safety procedures for RDC'22?

- RDC will operate to the fullest of our capabilities in accordance with the guidelines that have been put forth by the federal, state, and county agencies including CDC (Centers for Disease Control and Prevention), and the PA Governor/ Department of Health regarding COVID-19.

## What happens in the event of inclement weather/excessive heat and emergencies?

- In the event of inclement weather or excessive heat, RDC will take place inside of the Radnor Elementary School facility with a modified schedule, or will be cancelled.
- In the event of a serious camp emergency that requires information to be communicated quickly, communications will be distributed via an emergency notification mass-text message and/or by email.
- All other important camp-related information will be distributed via email.
- Please make sure we have your most readily accessible email address and cell phone number on file for all communications.

## What types of activities will my camper(s) participate in at RDC?

- RDC will operate on a structured daily schedule taking place indoors and outdoors at Radnor Elementary School. Activities include but are not limited to sports and games, creative arts and crafts, team building exercises, performing arts, swimming (off-site at the outdoor pool at Club La Maison) weekly group-based special event traditions such as Camp Olympics, Camp Carnival, and many others! Campers rotate through activities on a weekly basis that changes week to week.

## What should my camper wear and bring to camp each day?

- Campers must bring a drawstring bag/backpack to camp each day. The following items should all fit within the the camper's bag and should include:
  - Water, Lunch & Snacks - Campers must pack their own non-perishable lunch every day. Refrigerators and/or microwaves will not be available on site. There are some days at RDC where lunch or a special treat is provided for an optional add-on. If the camper is registered for any trips/food days, please plan to provide your own lunch or snack if necessary, or if the child is not signed up for trip/food days. If your child has allergies to any food items, please note that RDC may not have ingredient lists readily available for special snack/lunch days, but we are willing to make accommodations as we are best able. Please contact us with questions. On special lunch days, please pack your camper with their preferred beverage with lunch. We highly recommend that you send your camper with one or more bottles of water or a large, insulated water bottle.
  - Sunscreen, hand sanitizer, pack of tissues, and if applicable the camper's EpiPens and/or inhaler.
- Campers should wear appropriate camp clothes that consist of athletic apparel, including sneakers or rubber soled shoes should be worn every day. Sandals, flip-flops, Crocs, "Heeleys" (shoes with a wheel in the heel) and bare feet are not acceptable.
- On days when a camper is scheduled to swim, they should wear their swim suit to camp under their clothes. In addition to a swim suit, campers should bring their own towel and goggles on scheduled swim days. Campers may also bring extra clothes for after swimming in case there is an opportunity to change.
- We recommend that parents/guardians also apply sunscreen to their camper every day before coming to camp. For campers that are unable to reapply sunscreen at camp, the spray or dot method will be used – spray bottles supplied by parents will be sprayed on the campers and they will be responsible for rubbing it in; liquid bottles supplied by parents will be 'dotted' onto the camper by the staff members and the camper will be responsible for rubbing it in.

### Is there a lost & found at RDC?

- Our lost & found is located in the Radnor Day Camp Office which is Room 24.

### How will camper behavior be handled this year?

- Camper behavior will be held in accordance with the established Camper Code of Conduct that is in place for the camp. Details are subject to change.

### What items are not permitted at Radnor Day Camp?

- Hand-held electronic devices are not permitted during camp hours at RDC. Such items include I-pods, I-Pads, Kindles, cell phones, personal game systems, and hand-held organizers.
- Additional personal items such as toys and gadgets are also not permitted at RDC. Fidget Spinners, Fidget Cubes, etc. are not allowed at Radnor Day Camp.
- If your child comes to camp with items that are not permitted at camp, parents/guardians will be notified.
- We assume no responsibility for lost, stolen, or damaged electronics brought to camp.

## My camper will be doing Extended School Year, Reading Camp, Literacy Camp, or another RTSD summer school program. What do I need to know?

- On days that the RTSD program(s) overlaps with the RDC program, your child will attend RTSD (9:00-12:00) and then RDC for the afternoon. Bussing will be provided to transport your camper from the RTSD location to RDC. Your child will eat lunch upon arrival at RDC before joining in with their camper group. On days that the RTSD program does not overlap, campers will attend RDC for a full day unless you wish for them to be a half-day camper only.
- Campers who participate in an RTSD program will not be guaranteed to participate in weekly swimming or other specialty activity periods throughout the week. The activity schedule will vary each day and each week for each camper group.
- If you would like your camper to participate in the optional add-on Field Trips, please understand that the field trip schedule may overlap with the schedule of the RTSD program in which your child is participating. If you choose to sign them up for field trips, you are agreeing to send them to Radnor Day Camp on the days the trips will occur rather than RTSD. Dates of each field trip will be communicated prior to the start of camp.

## How are special camper circumstances, requirements, and life-threatening/non-life-threatening conditions handled at RDC?

- If your child has special circumstances or requirements, please contact the Radnor Township Parks & Recreation Department if you have not already done so to ensure that accommodations can be made as necessary, and as possible by our Department. Radnor Township makes every effort to make accommodations for campers with a variety of special needs including food allergies, mental, and physical disabilities. Due to limitations on staffing, facilities, and other conditions, we cannot guarantee that we will be able to make accommodations for your camper. The [Radnor Township Participant Information Form](#) must be received for review by our Department as soon as possible, and is part of the online registration process.

# RADNOR TOWNSHIP PARKS & RECREATION DEPARTMENT

## RADNOR DAY CAMP TRIP & EVENT CALENDAR 2022

RDC CELL: 610-955-4179 / RDC EMAIL: [radnortownshipdaycamp@gmail.com](mailto:radnortownshipdaycamp@gmail.com)

RECREATION OFFICE PHONE: 610-688-5600 / RECREATION EMAIL: [recreation@radnor.org](mailto:recreation@radnor.org)

MONDAY	TUESDAY	WEDNESDAY	THURSDAY	FRIDAY
<p>JUNE 27</p> <p><b>SURVIVOR WEEK</b></p> 	<p>JUNE 28</p> <p><b>DEVON LANES BOWLING</b></p>  <p>Grades 4 to 9 (AM Trip)</p>	<p>June 29</p> <p><b>WACKY WEDNESDAY</b> Mismatch Day</p>  <p><b>* Kona Ice Truck</b></p>	<p>JUNE 30</p> <p><b>DEVON LANES BOWLING</b></p>  <p>Grades 1 to 4 (AM Trip)</p>	<p>JULY 1</p> <p><b>ALL CAMP TEAM BUILDING/ CHALLENGES</b></p>  <p><b>* Pizza Day</b></p>
<p>JULY 4</p> <p><b>INDEPENDENCE DAY</b></p> <p><b>CAMP CLOSED</b></p> 	<p>JULY 5</p> <p><b>ENVIRONMENT &amp; NATURE WEEK</b></p> 	<p>JULY 6</p> <p><b>WACKY WEDNESDAY</b> Dress Like a Superhero</p>  <p><b>* Kona Ice Truck</b></p>	<p>JULY 7</p>  <p><b>OUTDOOR CAMPER GAMES</b></p>	<p>JULY 8</p> <p><b>NATURE Scavenger Hunt</b></p>  <p><b>* Pizza Day</b></p>
<p>JULY 11</p> <p><b>OLYMPICS WEEK</b></p> 	<p>JULY 12</p> <p><b>RED vs. BLUE</b> Wear your team colors!</p>	<p>JULY 13</p> <p><b>WACKY WEDNESDAY</b> Rep Your Favorite Team!</p>  <p><b>* Kona Ice Truck</b></p>	<p>JULY 14</p> <p><b>RED vs. BLUE</b> Wear your team colors!</p>	<p>JULY 15</p> <p><b>Upper Darby Summer Stage</b> All Camp (AM Trip)</p>  <p><b>OLYMPICS CLOSING CEREMONY</b></p>  <p><b>* Pizza Day</b></p>
<p>JULY 18</p> <p><b>Water Week</b></p> 	<p>JULY 19</p> 	<p>JULY 20</p> <p><b>WACKY WEDNESDAY</b> Crazy Hair Day - Bed Hair Edition</p>  <p><b>* Kona Ice Truck</b></p>	<p>JULY 21</p> 	<p>JULY 22</p> <p><b>All Camp Water Games</b></p>  <p><b>* Pizza Day</b></p>
<p>JULY 25</p> <p><b>SPACE &amp; TIME WEEK</b></p> 	<p>JULY 26</p> <p><b>Diggerland</b> Grades 4-9 (Full-Day)</p> 	<p>JULY 27</p> <p><b>WACKY WEDNESDAY</b> Back to the 80's &amp; 90's</p>  <p><b>* Kona Ice Truck</b></p>	<p>JULY 28</p> <p><b>Diggerland</b> Grades 1-4 (Full-Day)</p> 	<p>JULY 29</p> <p><b>NEON DAY GLOW PARTY!</b></p>  <p><b>* Pizza Day</b></p>
<p>AUGUST 1</p> <p><b>Disney Week</b></p> <p>* Dress Rehearsal</p> 	<p>AUGUST 2</p> <p><b>Dress In Your Disney Best!</b></p> 	<p>AUGUST 3</p> <p><b>CAMP SHOW PERFORMANCE FOR PARENTS &amp; FRIENDS at RMS</b></p> 	<p>AUGUST 4</p> <p><b>CARNIVAL CELEBRATION</b> Encke Park All Campers - All Day</p>  <p><b>* Kona Ice Truck</b></p>	<p>AUGUST 5</p> <p><b>Radnor Day Camp's Got Talent!</b></p>  <p><b>* Pizza Day</b></p>



# Radnor Day Camp

## Swimming Information

- ♦ Swimming takes place at Club La Maison outdoor swimming pool (219 Sugartown Road, Wayne).
- ♦ Camper groups will be bussed off-site on Radnor Township School Buses for swimming 1-2 times per week (subject to change).
- ♦ The swimming program will consist of group swim lessons as well as recreational swim time, and will be supervised by Club La Maison/Radnor Day Camp Staff—certified lifeguards will be provided by Club La Maison.
- ♦ The outdoor swimming pool at Club La Maison has a depth ranging from 3' to 9'.
- ♦ Campers will only be permitted in the deep end if/when they pass a swim test implemented by swim staff.
- ♦ For campers who are not comfortable or permitted to swim, there is a 'kiddie' pool with a depth of 1' along with an indoor Game Room consisting of a variety of games and activities.
- ♦ While swimming outside, campers will be exposed to sun and extreme heat. If you do not want your camper to participate in outdoor swimming, they will have the option of utilizing the La Maison Game Room (adjacent to the pool) for activities while the rest of their group swims.
- ♦ In addition to applying sunscreen to your camper prior to sending them to camp on a daily basis, please be sure to send extra sunscreen to be reapplied as needed on swimming days.
- ♦ Please alert the RDC Director and/or indicate on your registration form if your camper is a weak swimmer or if you have concerns. Please contact the Parks & Recreation Department if you'd like to discuss your camper's swim level or concerns in more detail.

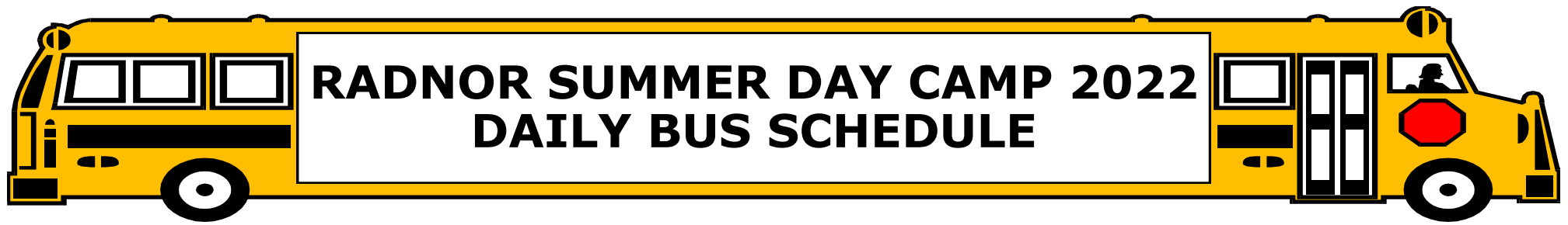
### What should my camper bring to the pool when they are scheduled to swim?

- A bag with a towel and bathing suit, clearly label all items with your child's name and grade.
- If your child is scheduled to have swimming in the morning (see sample schedule below), please have them wear a swim suit to camp underneath their camp clothes.
- Flip-Flops/sandals are ONLY permitted at the pool and are not permitted anywhere else at Radnor Day Camp. **Please do NOT send you child to camp wearing flip-flops or sandals.**
- It is recommended that each camper also brings a pair of swimming goggles.
- Club La Maison does permit life jackets. If you would like to send a life jacket with your camper on swimming days please contact our department at [recreation@radnor.org](mailto:recreation@radnor.org).

**NOTE: The swimming schedules will change weekly and are subject to change. Camper groups may only swim 1 to 2 times per week.**

**\* No swimming will take place on Fridays.**

SAMPLE SWIM SCHEDULE		
Day	Morning	Afternoon
Monday	D, E	A
Tuesday	B, C	E
Wednesday	A, B	D
Thursday	C, E	B



<u>Bus Stop</u>	<u>AM Pick-Up Time</u>	<u>PM Drop-Off Time</u>	<u>Notes</u>
<b>BLUE BUS—Bus # 28</b>			
FILIPONE PARK	8:23 AM	3:31 PM	
ODORISIO PARK	8:26 AM	3:29 PM	
RADNOR TOWNSHIP BUILDING	8:34 AM	3:23 PM	* For safety, we ask that all campers wait for the bus in the handicap parking spot at the Encke Park playground and not in the road leading up to the Township Building off of Iven Avenue.
COWAN PARK	8:43 AM	3:14 PM	
<b>GREEN BUS—Bus # 34</b>			
RADWYN APARTMENTS	8:10 AM	3:45 PM	* Exact bus stop location is at the main entrance on Bryn Mawr Ave. (near the blue awning).
ITHAN ELEMENTARY SCHOOL	8:25 AM	3:30 PM	* Exact bus stop location is in the parking lot between the tennis courts and school building.
CLEM MACRONE PARK	8:40 AM	3:15 PM	* Please refrain from parking in spaces near the entrance of the park to allow room for the bus to pull in

*All details are subject to change. Times may change and will require flexibility as sometimes buses can get held up at their locations or may be running off schedule. Please allow a 5 to 10 minute window for bus pick up and drop off as there is construction and road delays taking place throughout the Township.*

*Please be on time to pick up your campers! Thank you for your cooperation this summer!*

*Please review our Camper Code of Conduct page in the Welcome Packet to ensure you camper understands their responsibilities while traveling on the bus each day.*

## Radnor Township Parks & Recreation

# RADNOR DAY CAMP TRIP & EVENT INFORMATION & PROCEDURES

Please refer to the Radnor Day Camp Calendar for dates of trips and other event information

### Devon Bowling Lanes (half-day trip)

300 Lancaster Avenue, Devon, PA 19333 | 610-688-1920 | [www.devonlanes.com](http://www.devonlanes.com)

**Grades 1 to 4 & Grades 4 to 9 :** Bowling alley with 24 lanes and automatic scoring. This smoke free facility has provided many years of bowling excitement and memorable traditions for Radnor Day Campers. Campers will eat lunch when they return to camp.

### Diggerland (full-day trip)

100 Pinedge Dr, West Berlin, NJ 08091 | 856-267-0715 | [www.diggerlandusa.com](http://www.diggerlandusa.com)

**Grades 1 to 4 & Grades 4 to 9:** Campers will head over to the ever-popular theme park! This is their chance to experience a variety of age-appropriate rides and hop aboard diggers & tractors!

### Upper Darby Summer Stage (Moana Jr.) (half-day trip)

601 N Lansdowne Avenue, Drexel Hill, PA 19026 | 610-622-1189 | [www.summerstage.udfoundation.org](http://www.summerstage.udfoundation.org)

**Grades 1 to 3 & Grades 4 to 9 :** Since 1976 Upper Darby Summer Stage has been empowering young people and entertaining families as a longtime community theater offering a variety of plays & summer programs. Camper will enjoy a live performance of Moana Jr.!

### Camp Performance & Show

Radnor Middle School, 150 Louella Ave., Wayne PA 19087

**All Campers:** All summer long campers are working during Performing Arts to create and master their performance before putting on a spectacular show for family and friends to enjoy!

### End-of-Camp Carnival & Celebration

Encke Park, 305 Iven Ave., Wayne PA 1907

**All Campers -** Fun-filled day with a variety of games & activities to celebrate the close of Camp. This outdoor event will be held off site at Encke Park at the Radnor Township Building Complex.

## TRIP & EVENT PROCEDURES AND CONDUCT

- Only campers that pre-registered for Trips and Special Lunches will be permitted to attend the field trips. It will be assumed that if you signed your camper up for trips and special lunches that they are going on all of the trips and participating in all of the special lunches. If you do not want your child to attend the trip or participating in the special lunch (even though you enrolled them in trips and special lunch days), please notify the Camp Director in advance of the trip, that your camper is not participating in the trip or special lunch and specify the and trip(s) or lunch(es).
- Campers will be transported by Radnor Township School District school buses. Buses depart from Radnor Elementary School. Please be aware that all scheduled information is subject to change. All changes to scheduled information will be communicated through email.
- Campers must wear socks, shoes, and Radnor Day Camp 2022 shirts on all trips and at each event.
- The approximate departure time for most trips is 9:30 AM. If you are driving your camper to camp on a trip day, please be sure to have your camper at camp by 9:00 AM. On "half-day" trips, campers will eat lunch after they arrive back at camp (in most cases) and arrive back at Radnor Day Camp around 12:00 PM. On "full-day" trips, campers will eat lunch while on the trip and will arrive back at Radnor Day Camp around 2:30 PM. Depending on the location of the trip, the time at which the campers return to Radnor Day Camp may vary and can be as late as 1:00 PM for half-day trips or as late as 3:00 PM for full-day trips. Please be advised that half-day campers may only go on trips indicated as "half-day" trips - please refer to the trip calendar for more information.
- **Camper Behavior on Trips & Events**– The Radnor Day Camp Camper Code of Conduct applies to all portions of camp, including field trips and special events. Please refer to the Camper Code of Conduct for more information.
- **In case of an emergency and you must reach your child attending a field trip, contact the camp cell phone at 610-955-4179 or the Radnor Township Recreation and Community Programming Department 610-688-5600, and we will contact the camp staff.**



# What to bring to camp EVERYDAY:



- Comfortable, athletic apparel, including sneakers or rubber soled shoes, **everyday**. NO FLIP-FLOPS/SANDALS except at the pool!
- A backpack, labeled with campers first and last name
- *Before arriving to camp*, please apply sunscreen to your child.
- Extra sunscreen for your child (in a Ziploc bag labeled with their name to keep in the backpack). Please send SPRAY sunscreen if your child requires assistance reapplying.
- Lunch in a cooler/insulated bag labeled with their name
- **Water!** Labeled with their name.
- EpiPen, inhalers, etc. labeled with their name, packed in the backpack along with extras to be kept in the office.
- An extra change of clothes, labeled with their name, to keep in the backpack



# What to bring for FIELD TRIPS:



- Campers must wear socks, shoes, and their **Radnor Day Camp t-shirt** on all trips.
- Before arriving to camp, please apply sunscreen to your child.
- Extra sunscreen for your child (in a Ziploc bag labeled with their name to keep in the backpack). Please send SPRAY sunscreen if your child requires assistance reapplying.
- Lunch in a cooler/insulated bag labeled with their name
- **Water!** Labeled with their name.



# What to bring for SWIM DAYS:

- A towel, labeled with your camper's name
- Swimsuit (if your child is scheduled to swim in the AM, please send them to camp wearing their suit)
- **Quality swim goggles such as Speedo brand (no scuba masks allowed)**



speedo

# KONA ICE®

## IS COMING TO RADNOR DAY CAMP ALL SUMMER LONG!

**KONA ICE Days 2022:**

**Weekly on Wednesdays at 12:30 PM - 6/29, 7/6, 7/13, 7/20, 7/27**

**Thursday - 8/4 at RDC Camp Carnival**

**Flavor Your Own!**  
**FLAVORWAVE™**

Blue Raspberry

Ninja Cherry

Cotton Candy Pink

Orange Ya Happy

Lucky Lime

Monster Mango

Piña Colada

Strawberry'd Treasure

Lemonade

Watermelon Wave

• All Product Shown Actual Size •

**FLAVORS AVAILABLE BY REQUEST**

Black Cherry	Groovy Grape	Red Raspberry
Bubble Gum Pink	Kona Kola	Root Beer
Cherry Cola	Margarita	Root Beer Float
Cherry Limeade	Orange Creamsicle	Strawberry Banana
Coconut	Paraside Pink Lemon	Strawberry Daiquiri
French Vanilla	Peach	Wedding Cake
Green Apple	Pineapple	

SUGAR FREE FLAVORS  
AVAILABLE UPON REQUEST



**\$4**

**KIDDIE**



**\$5**

**KLASSIC**



**\$6**

**KING**



**\$7** **\$4 Refills**

**COLOR CHANGE**

COLOR CHANGING CUPS  
Watch them change right before your eyes!  
• COLLECT ALL 5 •

If you would like your camper to enjoy some delicious KONA ICE water ice, please send them to Radnor Day Camp with the appropriate amount of money (see the costs listed above) and our staff will be ready to assist them with purchasing their water ice!

KONA ICE days support the Radnor Day Camp camper scholarship program by contributing 20% of all sales towards the program. This partnership complements the opportunity registering families had when they donated to the scholarship program during the camp registration process.

Thank you for participating in the KONA ICE DAY and thank you for your contributions to our camp scholarship program! We sincerely appreciate all your support!

# 2022 PARENT/GUARDIAN CAMPER PICK-UP CARD\*

Please complete, print, and place this paper on the dashboard of your car when picking up your camper(s).

- Parent /Guardian \_\_\_\_\_
- Parent /Guardian \_\_\_\_\_
- Other \_\_\_\_\_

**CAMPER LAST NAME**

**CAMPER FIRST NAME**

CAMPER LAST NAME	CAMPER FIRST NAME

**HALF DAY PICK UP TIME**

**12:30 PM**



**FULL DAY PICK UP TIME**

**3:00 PM**

**\*Photo Identification may be checked upon picking up your camper\***

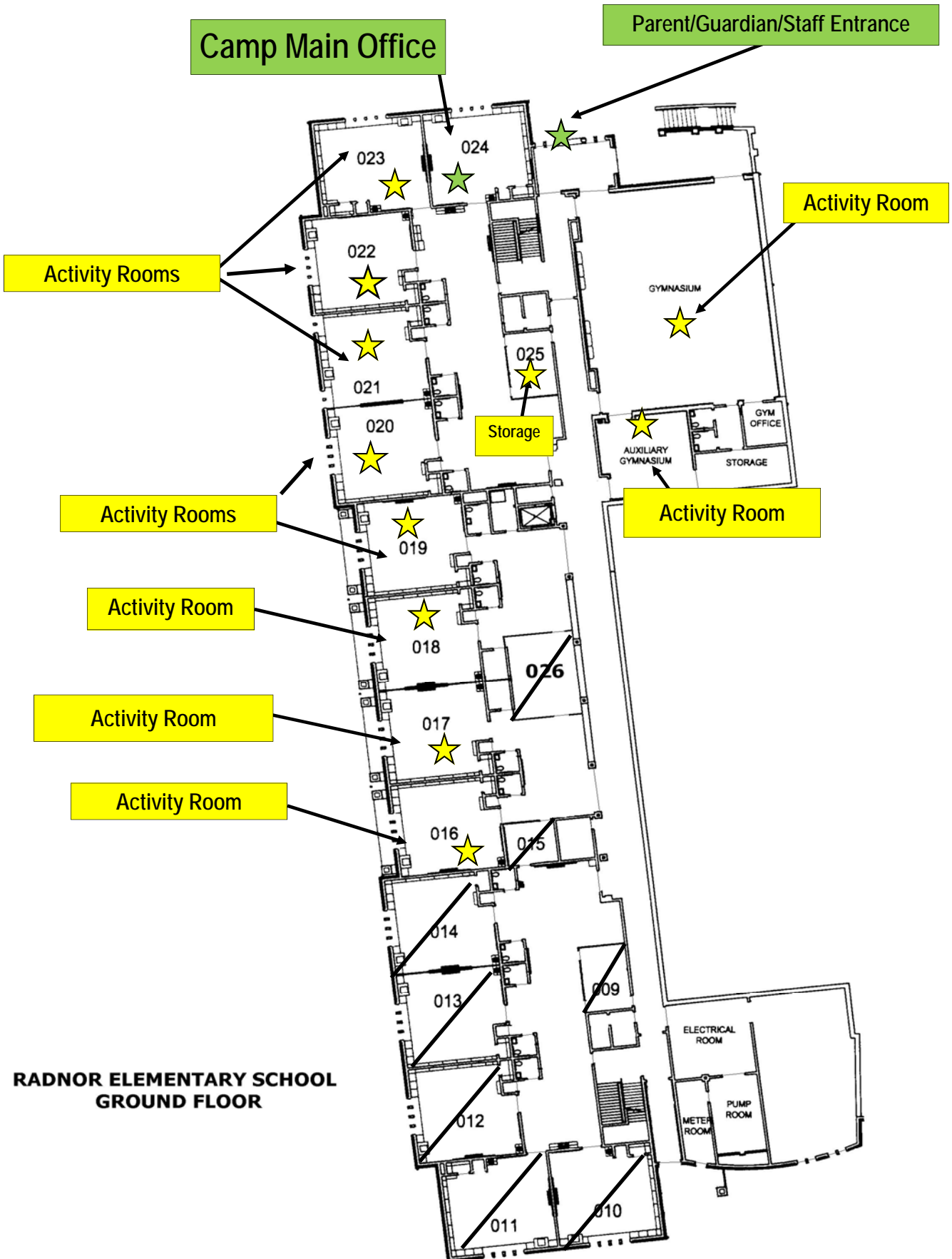
Please print additional copies of this form if more than one parent/guardian will be picking up your camper over the summer.



# Radnor Day Camp 2022

## Radnor Elementary School Floor Plan Overview Ground Floor

(Anticipated RDC Classrooms which are subject to change - all changes will be communicated accordingly)



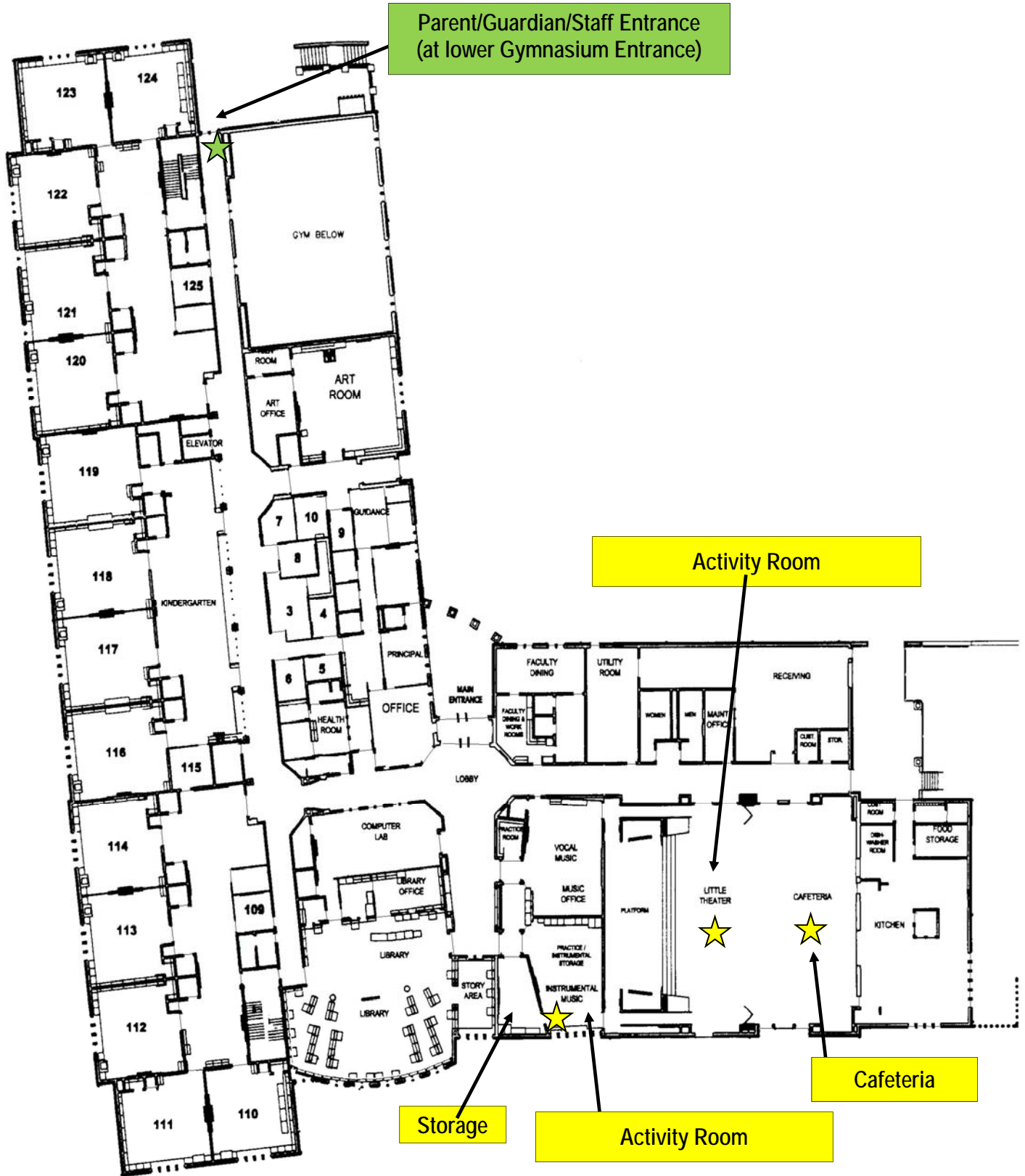
**RADNOR ELEMENTARY SCHOOL  
GROUND FLOOR**

\* Abbreviations for activities

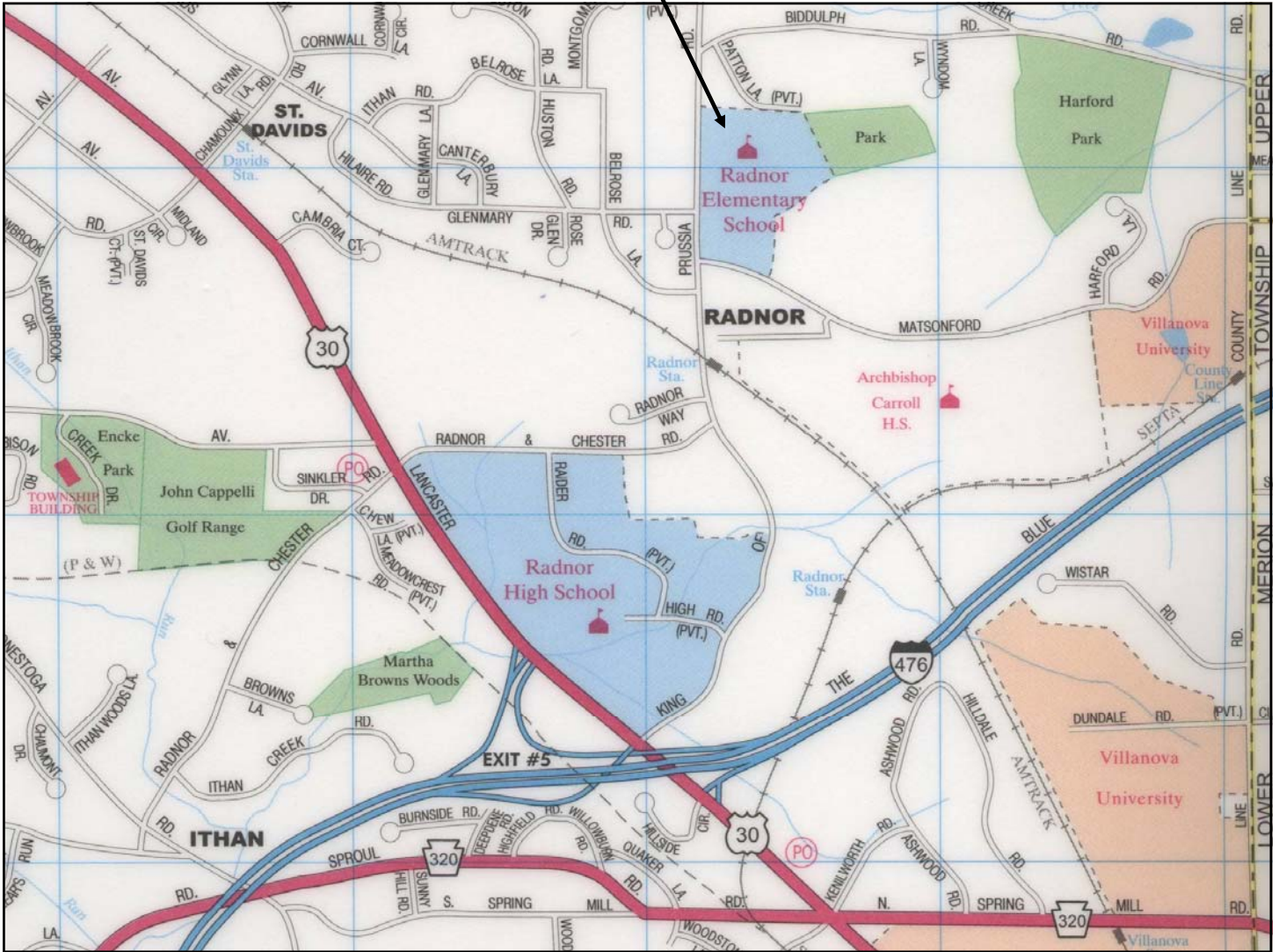
# Radnor Day Camp 2022

## Radnor Elementary School Floor Plan Overview First Floor

(Anticipated RDC Classrooms which are subject to change - all changes will be communicated accordingly)



# RADNOR DAY CAMP



Radnor Elementary School - 20 Matsonford Road, Radnor, PA 19087



## Radnor Day Camp 2022 - Radnor Elementary School Drop-off and Pick-up Procedures

Please allow for extra time when traveling to RDC to drop off and pick up your camper each day as there is construction and road delays taking place throughout the Township.

Parent/Camper/Staff entrance and exit at Gymnasium Entrance

Radnor Day Camp Parent drop-off and pick-up line at Gymnasium Entrance

Radnor Day Camp Bus drop-off and pick-up

Staff Parking

Radnor Elementary School

Matsonford Rd

### Important Information for Parent/ Guardian Drop-off & Pick-up:

If you are dropping off or picking up your camper(s), please do not park in any of the parking lots (unless you are dropping off late or picking up early). All parents/guardians should drive through the bus loop at the Gymnasium entrance and remain in their cars. Our staff will greet and direct you upon arrival.





## Who we are at Radnor Day Camp! Staff Descriptions 2022

**Radnor Day Camp Director – Jean Evans:** coordinates the planning, programming, and overall administration of Radnor Day Camp. This is Jean's 2<sup>nd</sup> summer working with us and her 1<sup>st</sup> summer as the Radnor Day Camp Director! Jean has an extensive background in working with children with a degree in Elementary/Early Childhood Education from Temple University. She has also completed her Master of Education with K-12 Principal Certification from Cabrini University!

**Performing Arts Coordinator – Meghann Weaver:** coordinates components of the Performing Arts Program for camp that facilitates the growth and development of expression through dance and music for campers with the production of a camp performance for participants, parents, and staff at the end of camp that will entail the building blocks of a performance including prop design, improvisation, and getting the creative juices flowing! This is Meghann's 14<sup>th</sup> summer as the Performing Arts Coordinator! Meghann has a BFA from the University of the Arts in Jazz Dance Performance and is the owner and director of Main Line Dance Company in Wayne.

**Sports and Games Coordinators – Jesse White & Evan Dori:** will coordinate the development and promotion of constructive, recreational activities through fun indoor and outdoor sports and games activities that promote health and wellness, teamwork, sports education and most importantly... FUN! This is Jesse's 1<sup>st</sup> summer working with us and this is Evan's 2<sup>nd</sup> summer working with us. This is the first year they will both take on the role of our Sports & Games Coordinators! Throughout the year, Jesse and Evan work with our department by running our Radnor Champions Programs for children with special needs. Jesse currently works as a paraprofessional at Wayne Elementary School and Evan is a rising senior at Radnor High School.

**Art Expressions Coordinator – Leighton O'Sullivan:** implements the daily curriculum of constructive and recreational arts & crafts projects that educate the children about different aspects of the Arts; projects are designed to encourage artistic expression, art appreciation, and imagination. This is Leighton's 4<sup>th</sup> summer working with us and 1<sup>st</sup> year as the Art Expressions Coordinator! Leighton is a current student at University of Delaware, and studying Nursing/Physician's Assistant.

**Creative Crafts Coordinator – Isabella Barnabei (Bella):** will coordinate unique projects and activities for campers to participate in throughout the summer. Campers will take home many special artwork pieces to their families and celebrate their work at the end of camp art show! This is Bella's 4<sup>th</sup> summer working with us and 1<sup>st</sup> year as the Creative Crafts Coordinator! Bella is a current student at West Virginia University, and studying Early Childhood/Elementary Education.

**Teamwork Adventures Coordinator – Josh Wittmann:** will coordinate teambuilding initiatives over the summer. Campers will use creative thinking to solve problems together while being outdoors in nature. They will explore, learn, and experiment with different activities that will help bring their camper group together as one big team! This is Josh's 1<sup>st</sup> summer working with us. Josh is a current Health & PE teacher at Ad Prima Charter School.

**Special Needs Support Staff – Various Returning & New Staff Members:** responsible for the safety, supervision, and education of campers with special needs who require one-to-one or additional group support. This group of staff members is comprised of teachers, paraprofessionals, and students who all have interest and/or specialize in special education.

**Leader II – Various Returning & New Staff Members:** responsible for the safety, and supervision of their assigned group of children as well as having the additional responsibility of supervising Leader Is within their groups along with managing the group's overall organization and daily operations.

**Leader I – Various Returning & New Staff Members:** responsible for the safety, and supervision of their assigned group of children. This group of staff is comprised of students who have experience working with children and are energetic and enthusiastic about working with Radnor Day Camp this summer!

## **Radnor Day Camp Standards for Staff Screening, Training, and Supervision**

The Radnor Township Parks & Recreation Department's Radnor Day Camp Program adheres to a high set of standards for the health, wellness, and safety of all participating campers. While Radnor Day Camp is not accredited by the American Camp Association (ACA), it conforms to many of the standards outlined by the ACA that address staff screening, training, and supervision. In many cases, Radnor Day Camp goes above and beyond the ACA standards. The Department believes that a systematic, multi-dimensional approach to planning and preparation produces positive outcomes of camper leadership and safety.

### **STAFF SCREENING & HIRING PROCEDURES**

The Department has a defined set of procedures that are followed in the screening and hiring of prospective Radnor Day Camp staff members:

- *The employment application and screening processes are identified and outlined and are applicable to all positions. The employment application also includes a voluntary disclosure statement.*
- *The procedures for screening and hire are reviewed by Township Labor Counsel on a regular basis.*
- *There are mandatory, annual background screening processes that include:*
  - *Compliance with Pennsylvania Child Protective Services Laws (CPSL) - this Law requires all employees who are responsible for the welfare of a child or having direct contact with children provide clearances for the following every 60 months (5 years):*
    - *PA Criminal Record Check*
    - *PA Child Abuse Clearance*
    - *FBI Fingerprinting Report*
  - *Compliance with a mandatory, annual background clearance administered through the Township*
- *Mandatory, annual drug testing*
- *National Sex Offender Public Website check*
- *Two reference checks and verification of work history (For all New Hires)*
- *Interview by Township Staff including the Township Manager (For all New Hires)*
- *Interview for returning candidates of new positions or candidates taking on additional responsibilities*
- *Defined mandatory, specialized certifications, these include:*
  - *Current PA Teacher Certification (For Camp Director)*
  - *Current CPR, AED, & First Aid certification (All Staff)*
  - *Current Lifesaving & Water Safety Training (For Aquatics Staff)*

**(Continued on next page)**

# Radnor Township

## Parks & Recreation Department

### Radnor Day Camp Standards for Staff Screening, Training, and Supervision (Continued)

#### STAFF TRAINING

The Department conducts formal days of pre-camp training that all camp staff are required to attend. Radnor Day Camp Directors, Specialty Coordinators, and other select staff members who serve in key roles attend additional training seminars prior to and during the camp season.

Topics covered through training include, but are not limited to the following areas:

- A. *Identification of Radnor Day Camp's purpose, mission, and intended outcomes and how they are incorporated into the camp structure, delivery, and program activities.*
- B. *Identification of the developmental needs of campers that are served and the corresponding delivery necessary for program and structure.*
- C. *Identification of the specific life-threatening and non-life-threatening special needs situations that exist at camp and corresponding procedures for handling them.*
- D. *Identification of the age-appropriate objectives, safety considerations, skills progression, operating procedures, and competencies required for camp program activities and creating a safe environment.*
- E. *Identification of age-appropriate behavior management and camper supervision that creates a physically and emotionally safe environment.*
- F. *Identification of the expectations regarding camper one-on-one interactions, two-deep leadership.*
- G. *Expectations for staff performance, conduct, and accountability (including what constitutes immediate dismissal from camp).*
- H. *Expectations for anti-discrimination and anti-sexual harassment including sexual abuse and misconduct and the recognition, prevention, and reporting of child abuse.*
- I. *Identification of the procedures regarding situational and incident reporting.*
- J. *Identification of emergency procedures at camp and the role of staff in implementation (in conjunction with the following entities, as applicable):*
  - *Radnor Township Police Department*
  - *Radnor Township School District*
  - *Radnor Fire Department*

#### STAFF SUPERVISION

The Radnor Township Parks & Recreation Department staff and Radnor Day Camp Director and Assistant Director conduct regular observations to provide support to all staff members and to ensure that acceptable job performance criteria are continually practiced. This includes daily and weekly performance assessments and verbal interaction offering feedback and discussion. Staff members are continually encouraged to discuss any concerns or questions with the Camp Director or Department Staff at any time. A documented, employee performance evaluation is conducted at the end of camp with each employee and is reviewed relative to subsequent summer hiring for the employee at Radnor Day Camp.

**MOIRA MULRONEY, ESQ.** *Ward 5*

*President*

**JACK LARKIN, ESQ.** *Ward 1*

*Vice President*

**MAGGY MYERS** *Ward 2*

**ANNAMARIE JONES** *Ward 3*

**LISA BOROWSKI** *Ward 4*

**JAKE ABEL** *Ward 6*

**SEAN FARHY** *Ward 7*



**RADNOR TOWNSHIP**  
301 IVEN AVENUE  
WAYNE, PENNSYLVANIA 19087-5297

Phone (610) 688-5600

Fax (610) 971-0450

[www.radnor.com](http://www.radnor.com)

**WILLIAM M. WHITE**

*Township Manager*

*Township Secretary*

**JOHN B. RICE, ESQ.**

*Solicitor*

**KEN FROHLICH**

*Treasurer*

**SUBJECT:** Nondiscrimination in Services

**TO:** Parents

**FROM:** Tammy Cohen, Director of Recreation and Community Programming

Admissions, the provision of services and referrals of clients shall be made without regard to race, color, religious creed, disability, ancestry, national origin (including limited English proficiency), age or sex.

Program Services shall be made accessible to eligible persons with disabilities through the most practical and economically feasible methods available. These methods include, but are not limited to, equipment redesign, the provision of aides and the use of alternative delivery locations. Structural modifications shall be considered only as a last resort among available methods.

Any individual and/or guardian who believes they have been discriminated against, may file a complaint of discrimination with **Radnor Township 301 Iven Avenue, Wayne, PA 19087** or with other relevant agencies/contacts outlined below:

Commonwealth of Pennsylvania  
Department of Human Services  
Bureau of Equal Opportunity  
Room 225, Health & Welfare Building  
P.O. Box 2675  
Harrisburg, PA 17110

Commonwealth of Pennsylvania  
Department of Human Services  
Bureau of Equal Opportunity  
Southeast Regional Office  
801 Market Street, Suite 5034  
Philadelphia, PA 19107

PA Human Relations Commission  
Philadelphia Regional Office  
110 N. 8<sup>th</sup> Street  
Suite 501  
Philadelphia, PA 19107

U.S. Department of Health and Human  
Services  
Office of Civil Rights  
Suite 372, Public Ledger Building  
150 South Independence Mall West  
Philadelphia, PA 19106-9111

Sincerely,

Tammy S. Cohen  
Director of Recreation & Community Programming



### Summer Camp Health & Safety Information

The continued good health and safety of campers attending Radnor Day Camp is and always will be our first priority. In light of recent flu outbreaks and COVID-19, we are continuing to emphasize our health and safety guidelines and practices more emphatically. This information will be extended to each staff member at our annual staff training and communicated directly to each of our parents/guardians.

Everyone needs to do their part to protect and ensure good health by calling attention to the importance of everyday preventive actions. This includes frequent hand washing with soap and water, or using hand sanitizer if hand washing is not possible; and using tissues to cover coughs and sneezes.

Do not send your child to attend camp if they are feeling symptomatic or if they have had an exposure to COVID-19 or has COVID-19. Please monitor your child's health status - If you suspect your child is unable to participate in daily activities due to illness, they should not attend camp.

RDC will operate to the fullest of our capabilities in accordance with the guidelines that have been put forth by the federal, state, and county agencies including CDC (Centers for Disease Control and Prevention), and the PA Governor/Department of Health regarding COVID-19. If your camper tests positive for COVID-19 we will be following the current recommended guidelines that are put in place by these agencies. Additional health and safety information will be communicated as needed.

If your child arrives at camp showing symptoms of ill health, we will be unable to accept him/her and you will be contacted. You will be required to pick him/her up from camp.

Such symptoms include camper complaints of:

severe pain/discomfort

2 or more episodes of vomiting or diarrhea

fever/chills

severe sore throat or coughing

red eyes with discharge

infected, untreated skin patches or lesions or severe itching of body or scalp

difficulty breathing or rapid breathing

visibly enlarged lymph nodes or still neck

blood or pus from ears, skin, etc.

unusual behavior characterized by listlessness, loss of appetite, or confusion

symptoms of chicken pox, lice, scabies, or strep throat

We appreciate your assistance and ask that you comply with these suggested measures to stop the spread of germs and illness this summer.

# *What you should know about...*



# Ticks &



# Tick Borne Illnesses

**Did you know that Pennsylvania has the highest number of reported cases of Lyme disease?**

## **Protect yourself and your family:**

You can protect yourself by following these simple steps when you spend time outdoors:

- Wear light-colored clothing with a tight weave to spot ticks & mosquito's easily.
- Wear enclosed shoes, long pants and a long-sleeved shirt. Tuck pant legs into socks or boots and shirt into pants.
- Check clothes and any exposed skin frequently for ticks while outdoors and check again once indoors.
- Consider using insect repellent. Follow label directions.
- Stay on cleared, well-traveled trails. Avoid contacting vegetation.
- Avoid sitting directly on the ground or on stonewalls.
- Keep long hair tied back, especially when gardening.

## **Signs and Symptoms of tick borne illnesses:**

Many tickborne diseases can have similar signs and symptoms. If you have been bitten by a tick and develop the symptoms below within a few weeks, a health care provider should evaluate the following before deciding on a course of treatment:

- Your symptoms
- The geographic region in which you were bitten
- Diagnostic tests, if indicated by the symptoms and the region where you were bitten

The most common symptoms of tick-related illnesses are:

- **Fever/chills:** With all tickborne diseases, patients can experience fever at varying degrees and time of onset.
- **Aches and pains:** Tickborne disease symptoms include headache, fatigue, and muscle aches. With Lyme disease you may also experience joint pain. The severity and time of onset of these symptoms can depend on the disease and the patient's personal tolerance level.
- **Rash:** Lyme disease, southern tick-associated rash illness (STARI), Rocky Mountain spotted fever (RMSF), ehrlichiosis, and tularemia can result in distinctive rashes.
- ***Some symptoms of Lyme disease are similar to symptoms of COVID-19.***

For more information about ticks and tick borne illnesses, **visit [www.cdc.gov/ticks](http://www.cdc.gov/ticks)**



# HELLO summer camp... GOOD-BYE head lice!



Kids love summer camp. Unfortunately, head lice like camp just as much as your children do. Don't let the pesky problem keep your child from enjoying camp fun this summer.

As you prepare to send your child to camp, you should also prepare for the potential of head lice. Because kids at camp are in close proximity to each other, July and August are often the busiest months for head lice.

## Be Proactive!

### Head Checks are a MUST!

Before camp starts, be proactive and check your child for head lice. You can do this yourself or for a small fee have it done professionally at [Lice Clinics of America](#).

If your child has recently had lice and you've been treating it with over-the-counter products they may still have viable activity. [Super lice](#), found in 48 states, including PA, are resistant to most chemical treatments.

### Head Contact and Hair Styles

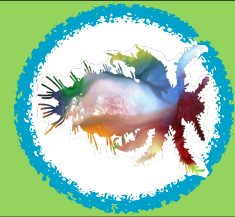
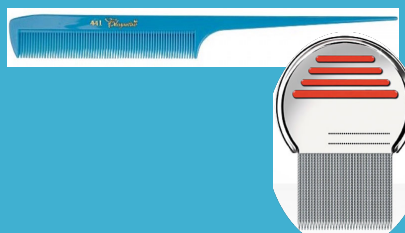
99% of head lice cases occur from direct head-to-head contact. Lice have large claws (they do NOT fly or jump) which makes it easy for them to cling to the hair of their host. Children with longer hair can decrease their chances of catching lice by keeping their hair in buns, pony tails or braids. Reminding your kids not to put their heads next to their friends heads or share personal items (hats, combs etc) will dramatically reduce the chances of head lice spreading.

### Keep Checking

Check your child's head regularly (once a week is recommended). Early detection is key to defeating head lice. A female louse can lay up to 10 eggs per day so the sooner you can detect, the better. Go through your child's hair with a metal tooth lice comb and watch for any excessive itching. Behind the ears and the nape of the neck are common spots to find lice eggs.

### How to conduct a DIY head check.

Have your child sit in a chair, preferably outside. Using a rattail comb, chopstick or lice comb inspect the hair and scalp closely, looking for nits (eggs) attached to the hair shaft. A nit is teardrop shaped, as small as a poppy seed and glued to one side of the hair shaft, about a 1/8 inch from the scalp. It cannot be removed simply by blowing on it or flicking it with your finger. [Click here to view video](#).



## Prevention

Be diligent with the use of natural head lice preventative treatment products. There are many chemical-free products on the market including sprays, shampoos, conditioners and hair accessories. Clinical studies have shown that key ingredients such as **peppermint oil, citronella, tea tree and lavender** all help to fend off lice.

Brought to you by:



### Urgent Care for Lice Removal

FDA-Cleared Technology  
No Pesticides  
100% Guaranteed

Treatment & Preventative  
Products

1982 Butler Pike, Conshohocken  
[www.liceclinicphilly.com](http://www.liceclinicphilly.com)  
610-222-6149