



BERGMANN

ARCHITECTS ENGINEERS PLANNERS



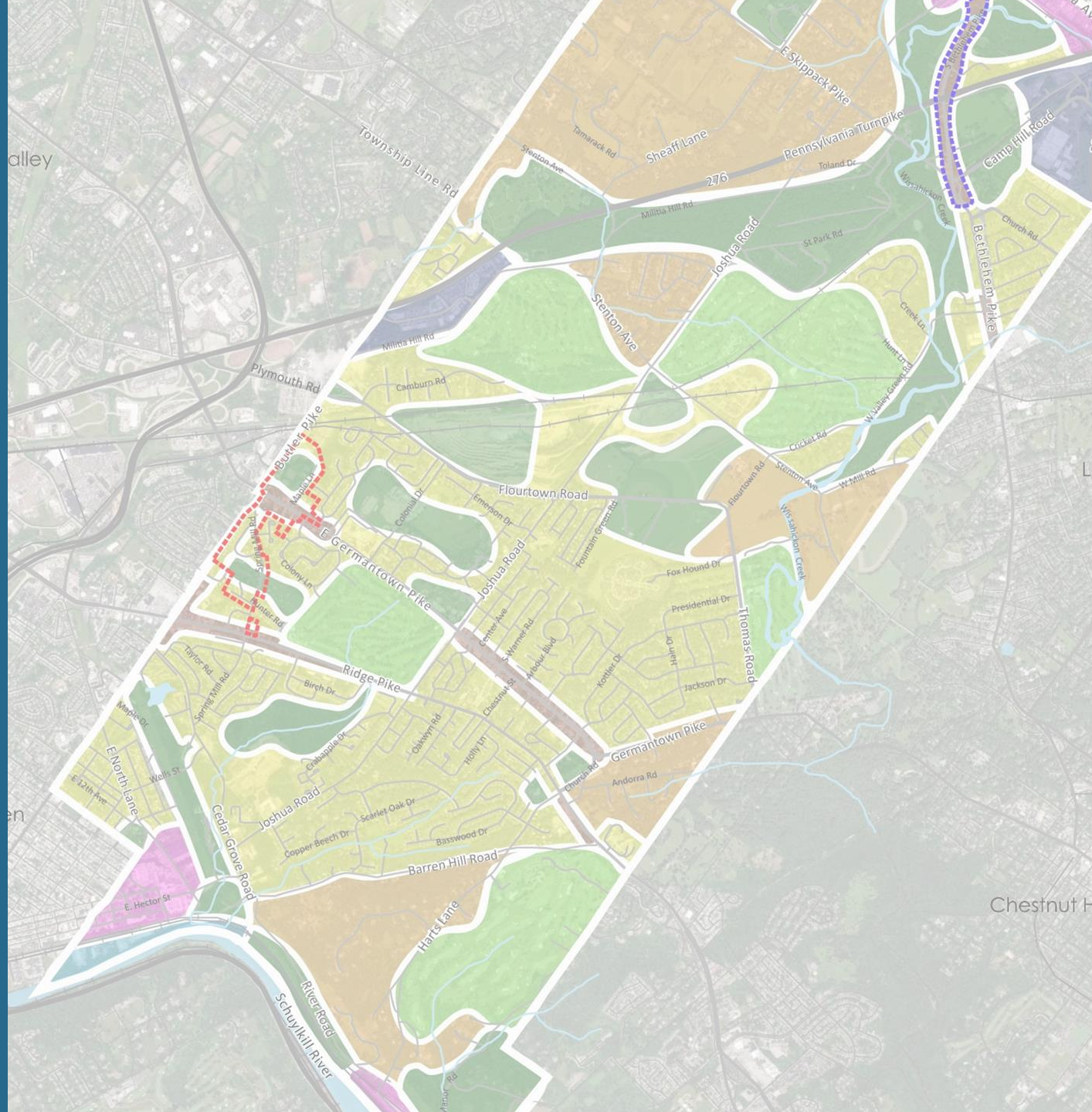
Radnor Comprehensive Plan – Substantial Update

July 11th, 2022

NATIONAL FIRM. STRONG LOCAL CONNECTIONS.



Team Introductions





BERGMANN

ARCHITECTS ENGINEERS PLANNERS

Bergmann has joined Colliers Engineering & Design



**Dave Schwartz,
P.E., PTOE, AICP**
Project Manager



**John Steinmetz,
FAICP**
Principal Planner



**Elizabeth
Podowski King,
RLA, AICP**
Senior Project
Planner



**Christina
McInenery, AICP**
Project Planner

- Full-service, multidisciplinary firm – “Goldilocks”- size
- Projects across the northeast
- Comprehensive Planning Experience
- Public Outreach Specialists

20

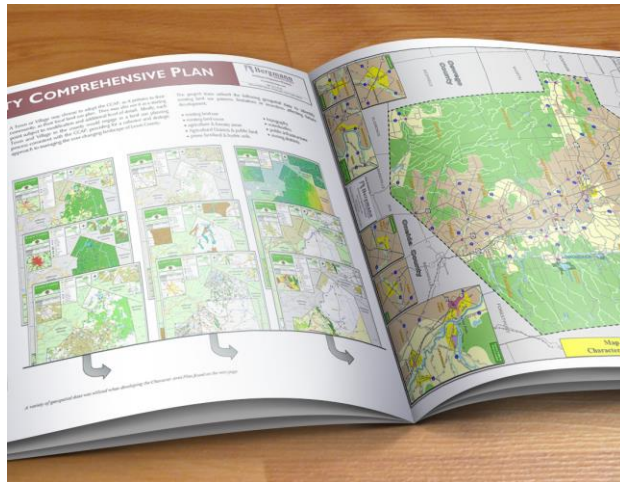
AICP
Professionals

61

Office
Locations

1800+

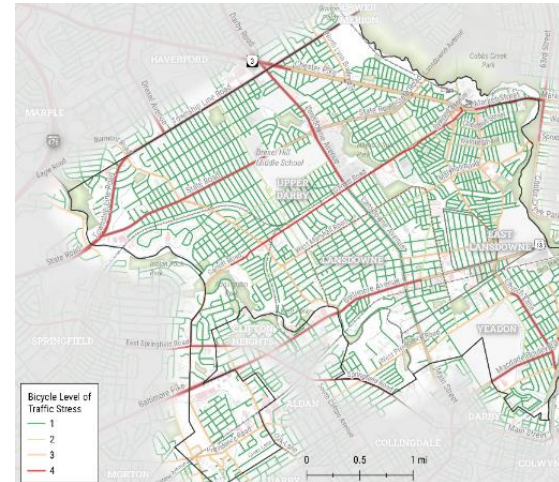
Professional &
Technical Staff



Comprehensive Plans



Regional Plans



Multi-Modal Plans



Public Outreach



- Economic & Fiscal Impact Analysis
- Market Studies
- Extensive Experience in Comprehensive Plans
- Founded in social, environmental, fiscal and economic systems (the “4” in 4ward Planning)



Todd Poole
MPA, EDFP
Managing Principal



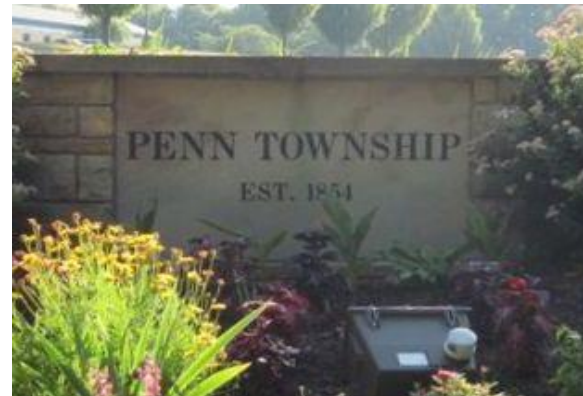
Erin Camarena,
AICP, LEED AP
Senior Associate



South Whitehall Twp



Bensalem Twp



Penn Twp



Lancaster City

Scope & Approach



Green Infrastructure Practices and Street Trees

Benches

Pops of Color to Liven Pedestrian Environment

Bike Rental Facilities

Potential Outdoor Cafe Seating

Potential Pervious Pavement

Bailey Ave | Placemaking
Highgate Ave to Rounds Ave Block

**Our Process Involves Walking Through a Series
of Questions...and Helping you Answer them.**

Where Are We Today?

Where Do We Want to Go?

How Do We Get There?

Where are we Today?

1

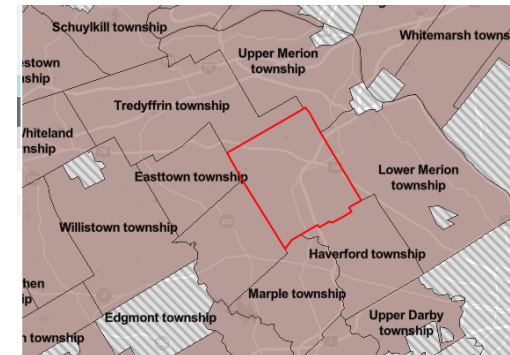
Review Previous Efforts

- What Worked; What didn't; Why?

2003 Comp Plan

Garrett Hill Master Plan

Wayne Master Plan



2

Establish Base Trends

- Regional and Local

Highlight Relevant Data and Trends

Population Estimates	
Income & Poverty	Radnor township, Delaware County, Pennsylvania
Population Estimates, July 1 2021, (V2021)	NA
PEOPLE	
Income & Poverty	
Median household income (in 2020 dollars), 2016-2020	\$133,790
Per capita income in past 12 months (in 2020 dollars), 2016-2020	\$60,544
Persons in poverty, percent	5.8%

Where do we want to go?

1

**Specialized Public Outreach
Throughout Plan**



2

**Develop Community Themes,
Not Planning Elements**

3

**Specific Issues Important to
Community**



Image of plaza before design standards are implemented.



Representative rendering of plaza after design standards are implemented.

Public Outreach



Public Outreach

Reaches a Diverse Audience

- Community-Driven
- Inclusive
- Flexible
- Build on Past Efforts
- Options for Feedback
 - QR codes
 - Hard to Reach Communities
 - "Meeting in a Box"
- Tailored for each Community

Mejorías Planeadas

- Plantaciones nuevas
- Remover los carteles colgantes
- Instalar postes de luz ornamentales

Antes



Después



MEETING IN A BOX



WHAT IS A MEETING IN A BOX?

Meeting in a Box is designed for community groups, neighborhood associations, or friends to gather at a convenient time and location to share their opinions about the future of the City of Lancaster. The Meeting in a Box "kit" contains everything needed to hold your own discussion including instruction sheets for the host/facilitator, discussion questions, worksheets for participant responses, and directions for recording and returning responses.

ROLE OF THE FACILITATOR

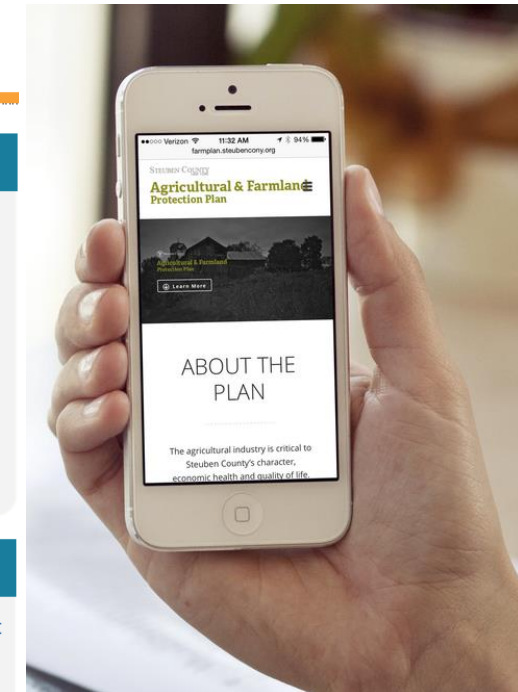
We appreciate your effort to facilitate this meeting. By utilizing the Meeting in a Box, you can ensure more voices are heard and help shape the visions and policies for the Planning Our Future Lancaster Comprehensive Plan. As facilitator, you will be responsible for organizing a group of people, posing discussion questions and summarizing feedback. After your session, you will return materials (pages 4-9) to Emma Hamme by mail or email.

SAMPLE MEETING AGENDA

- Welcome and Introductions (10 minutes)
- Comprehensive Plan Overview (5 minutes)
- Group Discussion (20-45 minutes)

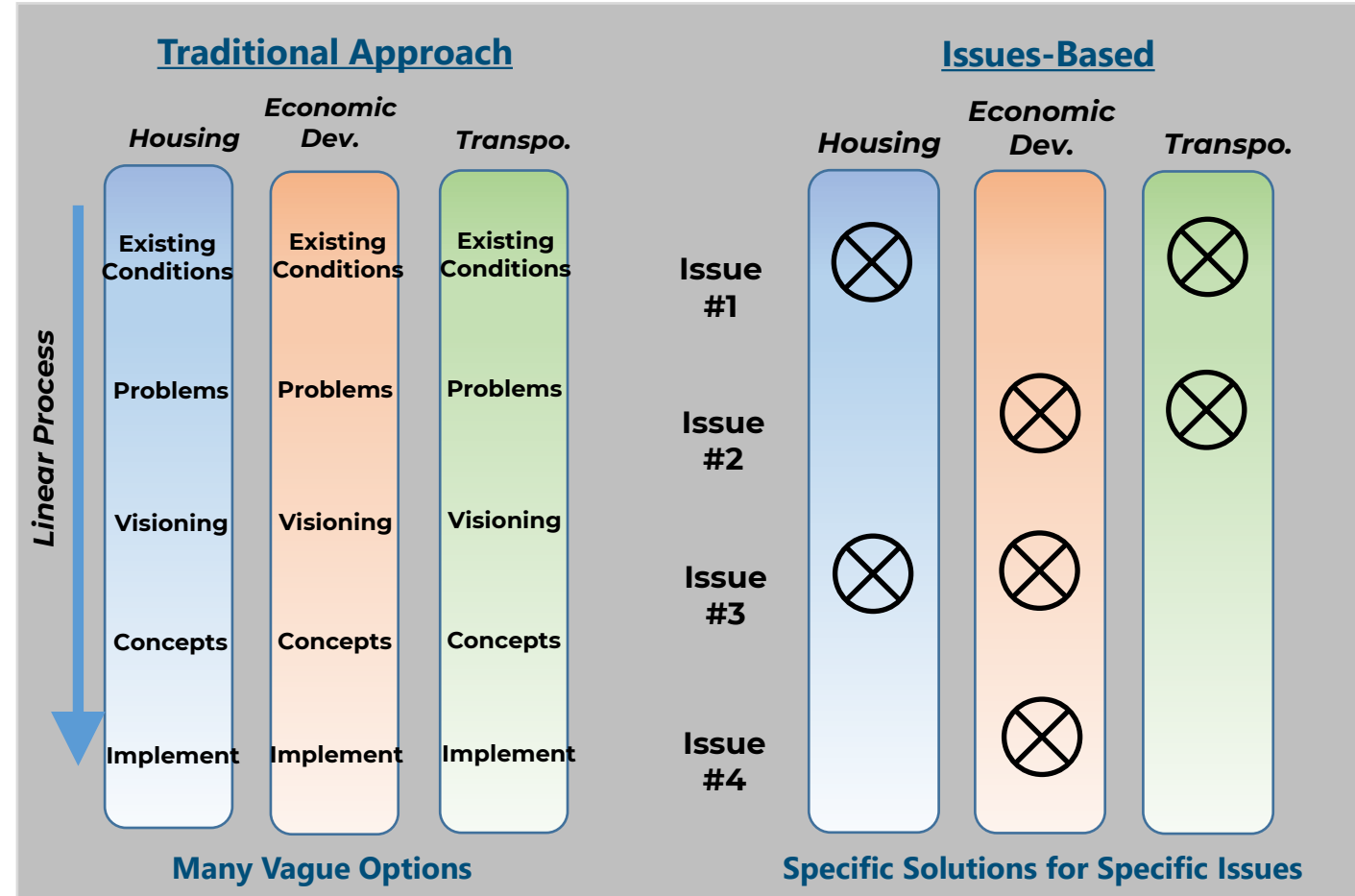
SAMPLE MEETING AGENDA

After your session, please return pages 4 - 9 of this document to Emma Hamme (City of Lancaster):



How do we get there?

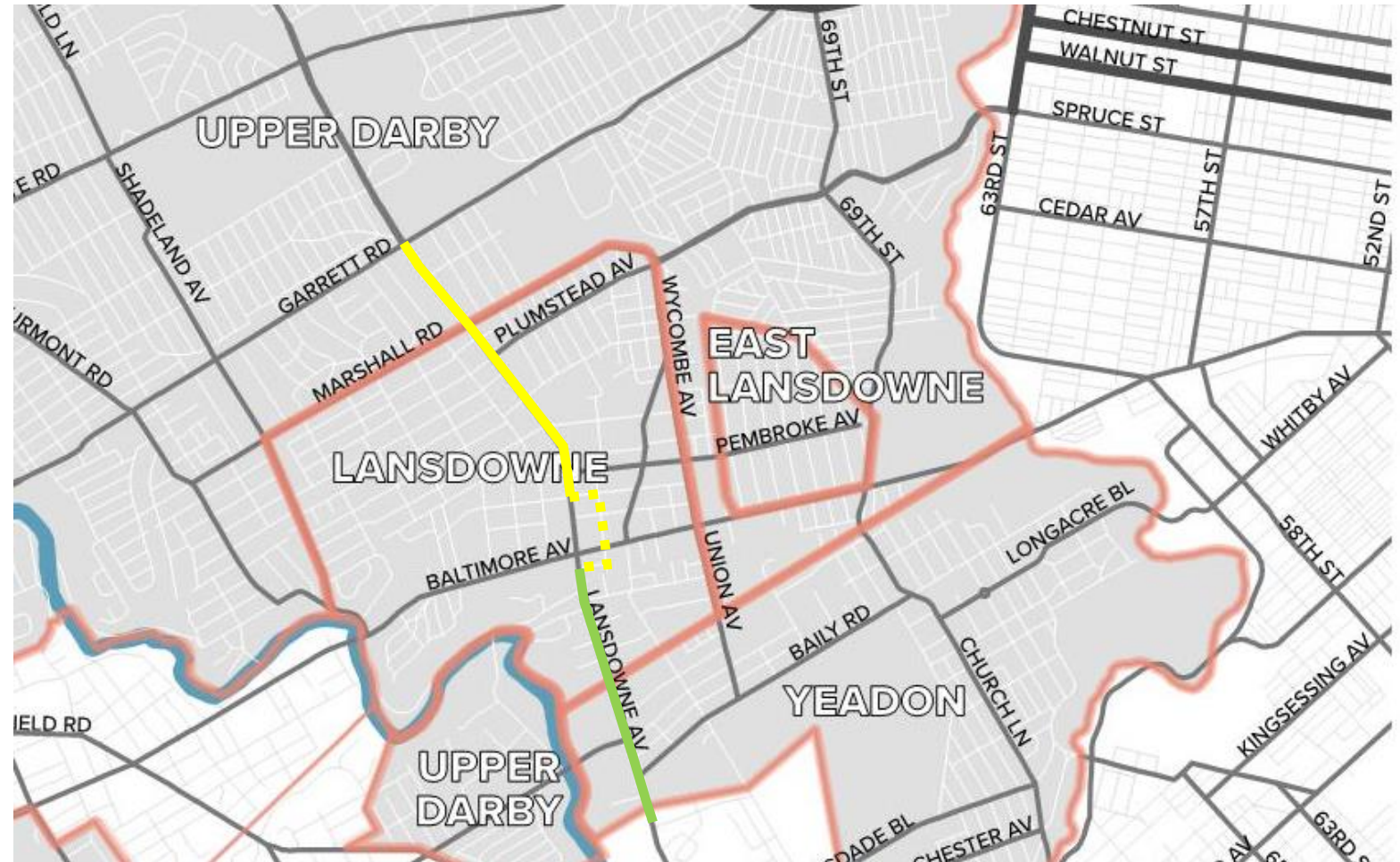
- 1 Implementable Comp Plan from DCED - Purpose**
- 2 Issues – Based Plan**
 - Specific non-transferable, measurable
 - A “process,” not just a “plan”
- 3 MPC Compliant**
 - Element Snapshots
- 4 Focus on Implementation**
 - During plan



How do we get there?

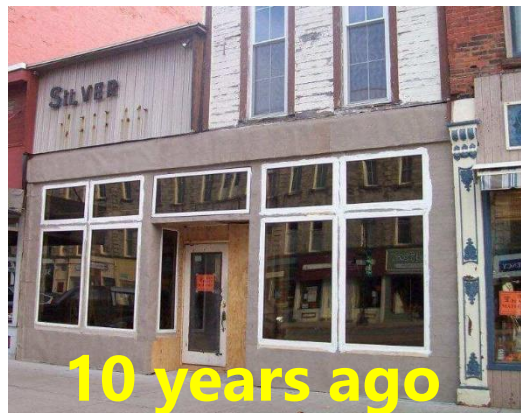
Implementation- Transportation

- Eastern DelCo Bikeway
Prioritization Study



How do we get there?

Implementation – Revitalization



Revival

Re-Use



Return on Investment (ROI)

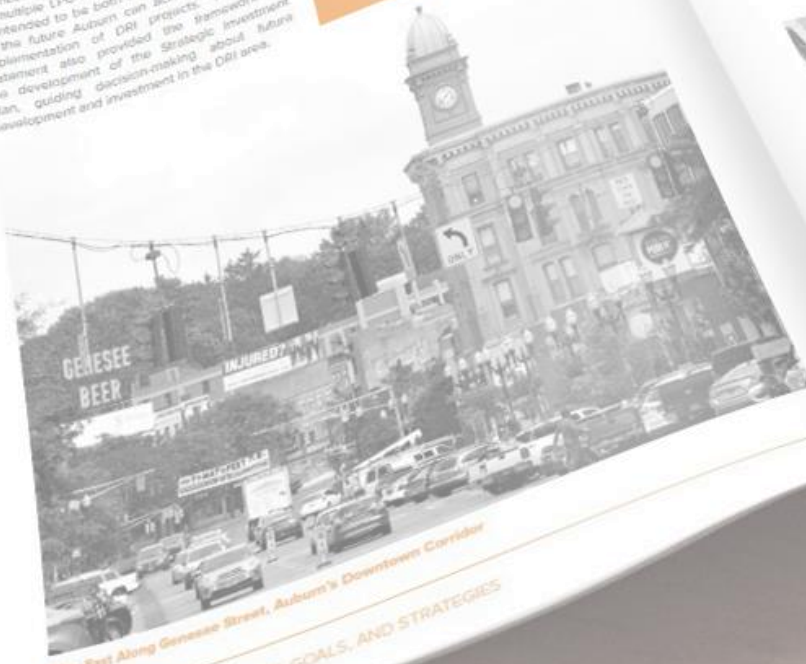
Why Our Team?

SECTION 2.1 COMMUNITY VISION

The vision statement was originally drafted by the City of Auburn as part of the City's Downtown Revitalization Initiative (DRI) application process and served as a starting point for discussions among the Local Planning Committee (LPC) members and the public. Over the course of multiple LPC meetings, the community vision is intended to be both ambitious and illustrative of the future Auburn can achieve through the implementation of DRI projects. This vision statement also provided the framework for the development of the Strategic Investment Plan, guiding decision-making about future development and investment in the DRI area.

“ THIS PLACE MATTERS.

The City of Auburn is committed to leading in many respects, including economic success, historic assets, vibrant education and civic engagement, and ensuring the highest quality of life supported by a strong tax structure, diversity, and regional vibrancy for a West End Arts District.



View East Along Genesee Street, Auburn's Downtown Corridor

PRIORITY PROJECTS

The LPC, guided by public input, recommended 18 projects for the business, downtown, historic, parks and recreation, and public works areas. The following table lists the projects recommended by the LPC and the priority projects recommended for the DRI.

- Alignment with DRI goals and objectives
- Community and economic benefits
- Impact on city government and services
- Public support
- Tax-incentive potential
- Workforce development opportunities



Proposed Transformation of a Street in the Downtown Corridor

Team

DIFFERENTIATORS

1 PERSONAL SERVICE

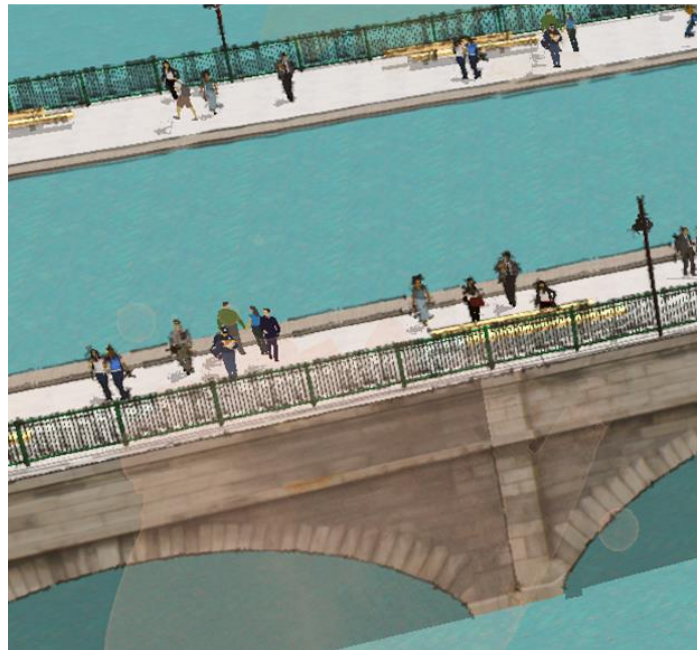
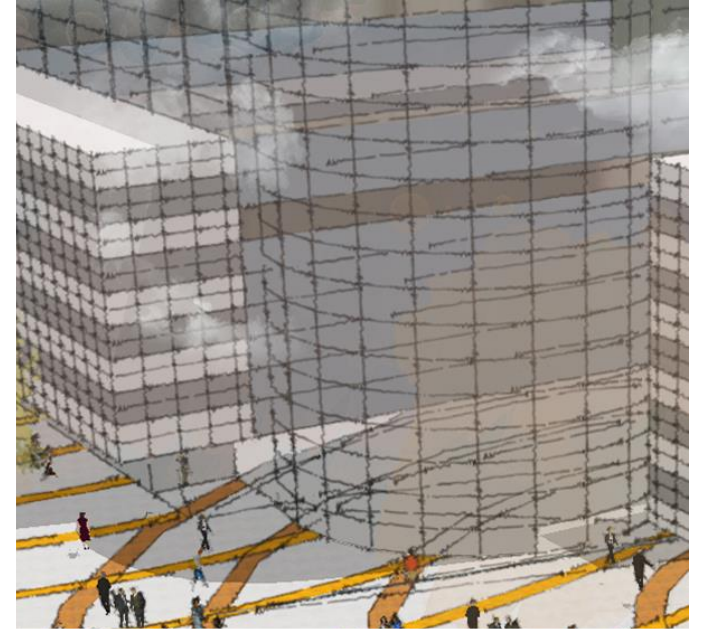
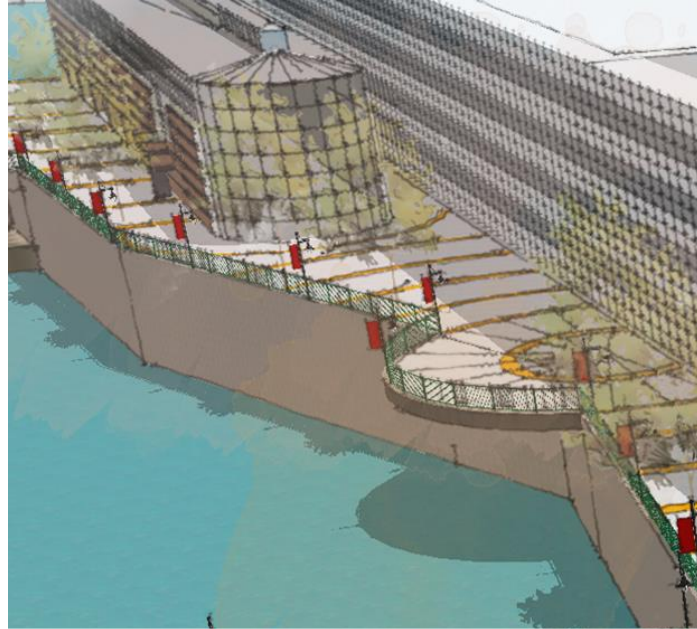
2 SPECIALIZED, NATIONALLY
RECOGNIZED TECHNICAL
EXPERTISE

3 LOCAL KNOWLEDGE AND
EXPERIENCE

4 FOCUS ON
IMPLEMENTATION



THANK
YOU



“Let’s sit at the
table **TOGETHER**”

Q & A

