

Radnor Township

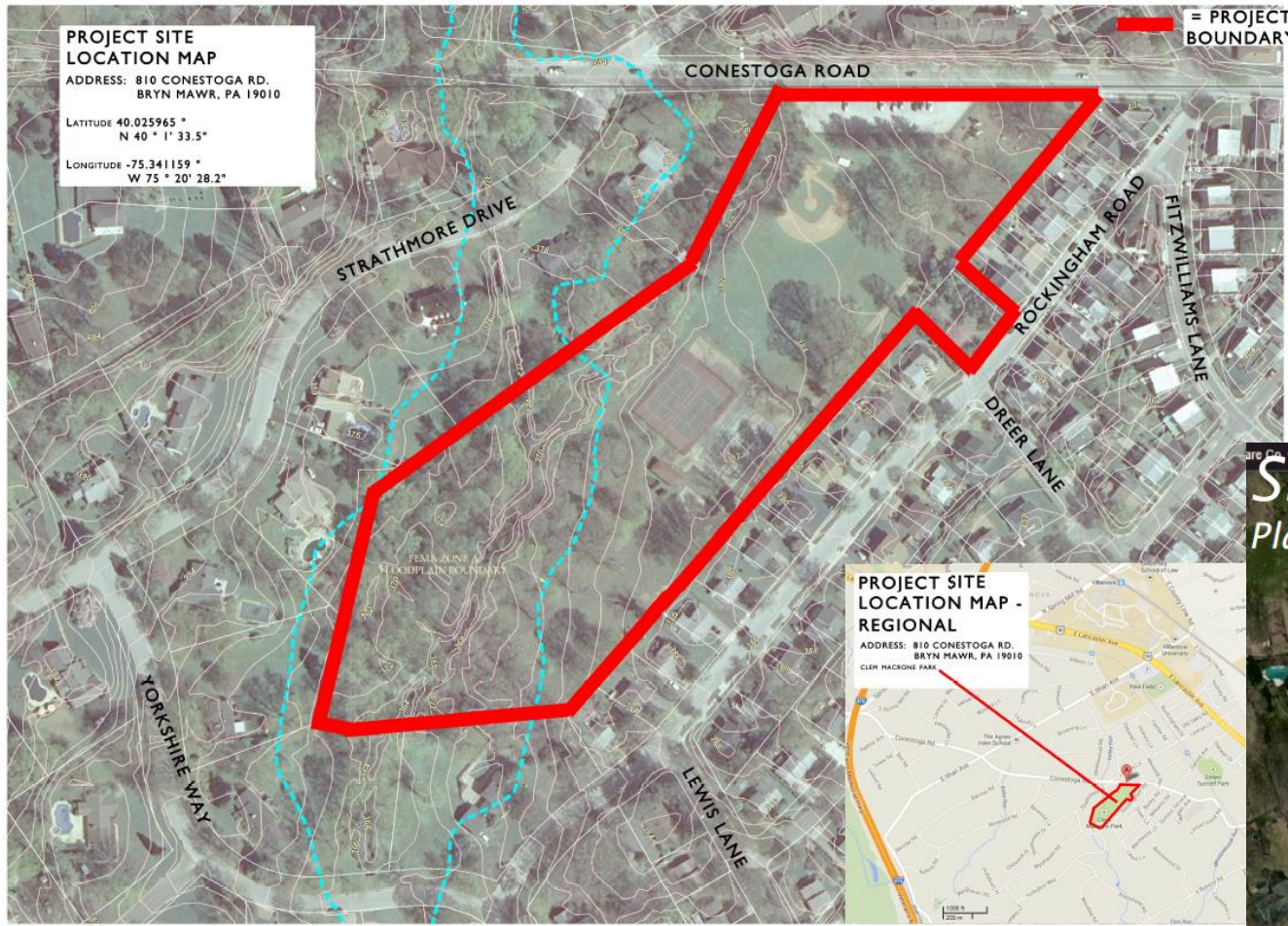
Clem Macrone Park Rehabilitation & Master Plan Implementation Project



The Road We Travelled....

- *January 8, 2014 – Design team visited the park with neighbors and evaluated existing conditions*
- *January 18, 2014 – Met with community members and the Garrett Hill Coalition to capture their input*
- *February 26, 2014 – First design concept presented to community for feedback and further evaluation*
- *April 10, 2014 – Presented to Parks & Recreation Board for feedback*
- *April 28, 2015 – Presented to Board of Commissioners for feedback*
- *July 21, 2015 – Review of final plan with community members at the park*
- *Fall 2015– Board of Commissioners Final Budget Review*
- *Winter/Spring 2016 – Design/Construction Bid/Award*
- *July 4, 2016 – Groundbreaking Ceremony*
- *November 10, 2016 - Project Construction Begins*
- *September 9, 2017 – Grand Re-Opening!*

**PROJECT SITE
LOCATION MAP**
ADDRESS: 810 CONESTOGA RD.
BRYN MAWR, PA 19010
LATITUDE 40.025965 °
N 40 ° 1' 33.5"
LONGITUDE -75.341159 °
W 75 ° 20' 28.2"



**PROJECT SITE
LOCATION MAP -
REGIONAL**
ADDRESS: 810 CONESTOGA RD.
BRYN MAWR, PA 19010
CLEM MACRONE PARK

Dense Population

Neighborhood Park

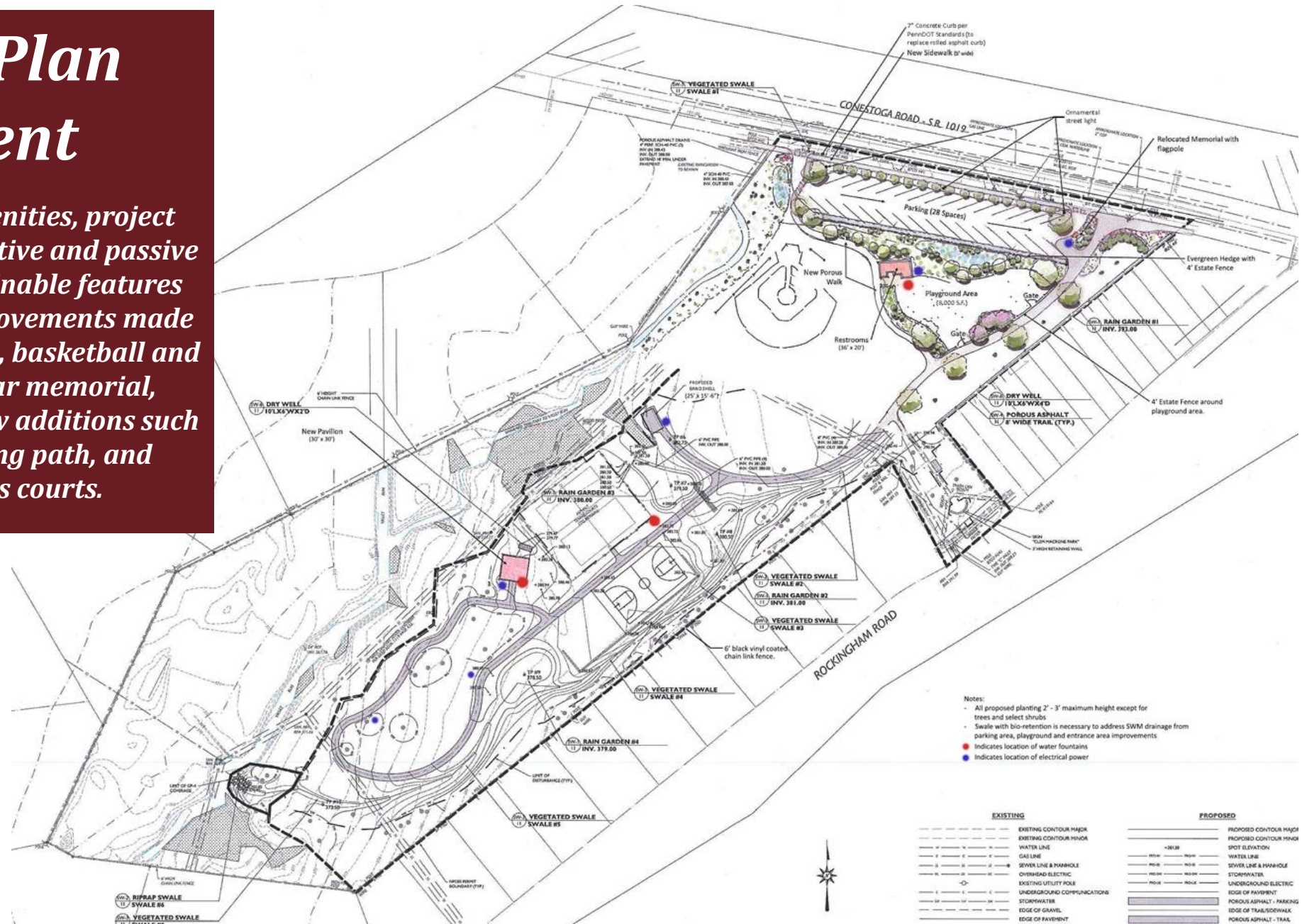


Previous Park Conditions



Conceptual Plan Development

Features new and improved amenities, project retains and captures the park's active and passive features, and incorporates sustainable features throughout the entire park. Improvements made to the playground, comfort station, basketball and tennis courts, baseball field, war memorial, parking lot, and park signage. New additions such as a pavilion, bandshell, walking path, and pickleball play at the tennis courts.





Radnor Township



Monday, July 4th at 12:15 PM

Please join us at the Clem Macrone Park

GROUNDBREAKING!




Radnor Township, along with members of the Garrett Hill Community, will host an official groundbreaking to celebrate the start of construction for the Clem Macrone Park Project!

Please join us on Monday, July 4th at 12:15 PM and meet inside the park entry gate near the pine trees.

The groundbreaking will take place after the Garrett Hill 4th of July Parade and at the start of the community event that will run from 12:00 to 2:00 PM!








Your Tax Dollars at Work


Clem Macrone Park Project • Budgeted Total Cost \$1,843,245.75




Board of Commissioners:
 Philip M. Ahr, Ward 7, President
 Lucas A. Clark IV, Esq., Ward 3, Vice-President
 Richard F. Booker, Esq., Ward 2
 Donald Curley, Ward 6
 James C. Higgins, Esq., Ward 1
 John C. Nagle, P.E., Ward 5
 Elaine P. Schaefer, Ward 4


Treasurer - John E. Osborne
Former Commissioner - John Fisher, Ward 7

Administration:
 Tammy S. Cohen, Director of Recreation & Community Programming
 Stephen F. Norcini, P.E., Director of Public Works & Engineering
 William A. White, MBA, Director of Finance
 William A. Colarulo, Superintendent of Police
 Kevin W. Kochanski, RLA, CZO, Director of Community Development



CLEM MACRONE PARK
IMPROVEMENT PLAN





A Special Thank You to the Residents of Garrett Hill, who helped put this plan together!
www.radnor.com/cmproject





*Clem Macrone Park closed on Thursday, November 10, 2016
and construction started at the park!*



Construction continued through 2016 and into 2017!

Radnor Township

Clem Macrone Park - GRAND RE-OPENING! *Rehabilitation & Master Plan Implementation* *Saturday, September 9, 2017*



The Clem Macrone Park Grand Re-Opening took place on Saturday September 9, 2017. It was a beautiful day for the event with the sun shining bright and excitement all around! At 6:00 PM our ceremony began and this was an opportunity to thank everyone who made this project a reality!



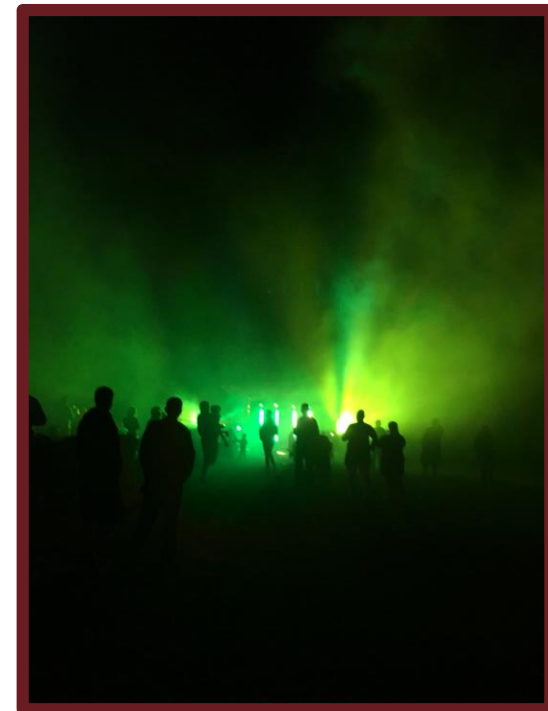
We also want to take the time to thank everyone who came out to the event to see this amazing park re-open!

The event included family fun activities such as bounce houses, a balloon twister, and free water ice!

The most popular attraction by far was the newly renovated playground!



After the ceremony, there was musical entertainment for the crowd to enjoy. Entertainment featured Former Ward 7 Commissioner John Fisher and his band!



For the finale, there was a wonderful colorful light show! Community members sat back and watched the beams of light dance around the park as the music played!

A Park for Everyone...

Clem Macrone Park has a reputation for being the most heavily utilized in the park system by its neighboring residents and by members of the community at-large. A variety of active and passive recreation takes place year-round as it is suitable for a wide-range of outdoor pursuits!



A Playground for Everyone...The new playground boasts a lot of great features! Designed almost entirely inclusive, most items are either ground level play or accessible via transfer stations, accessible stairways/walkways or bridges! It is ADA (Americans with Disabilities Act) compliant, meeting all certification requirements for today's safety standards - we did not just meet the minimum requirement we exceeded it! It is also Consumer Product Safety Commission compliant and conforms to the Universal Construction Code.

Green Features Too...

Playground World Systems is made right here in Pennsylvania and is a green playground equipment leader/Silver Level Certified/Cradle to Cradle Silver Certified and is the first and only playground manufacturer to have products Cradle to Cradle Certified Silver. This is a rigorous and comprehensive environmental certification system that evaluates products and materials for their impact on human and environmental health and assures the ability to recycle our products after their usable life. Equipment is made of reusable materials. They are PVC-free, eliminating 99.99% of harmful PVCs from its products in 2008. Eco-Armor® is utilized, a durable, thermoplastic, PE (Polyethylene) coating that is phthalate free, lead free, and cadmium free, and averages a 38% lower carbon footprint than PVC coatings. It also includes "Playpod" for maintenance or information to the community via smartphone tag scanning.



New Park Amenities!



Pavilion

Accommodates family gatherings and community groups with approximately 24 people at the 6 picnic tables!



Entertainment "Bandshell"

A new, dedicated place for concerts, entertainment, and activities!



Existing Park Features Improved!



Tennis Courts

Renovated tennis courts are also lined for pickleball and feature a newer, slimmer fencing design!



War Memorial

Memorial space now dawns the park's entrance and celebrates fallen heroes from the Korean War and World War II!

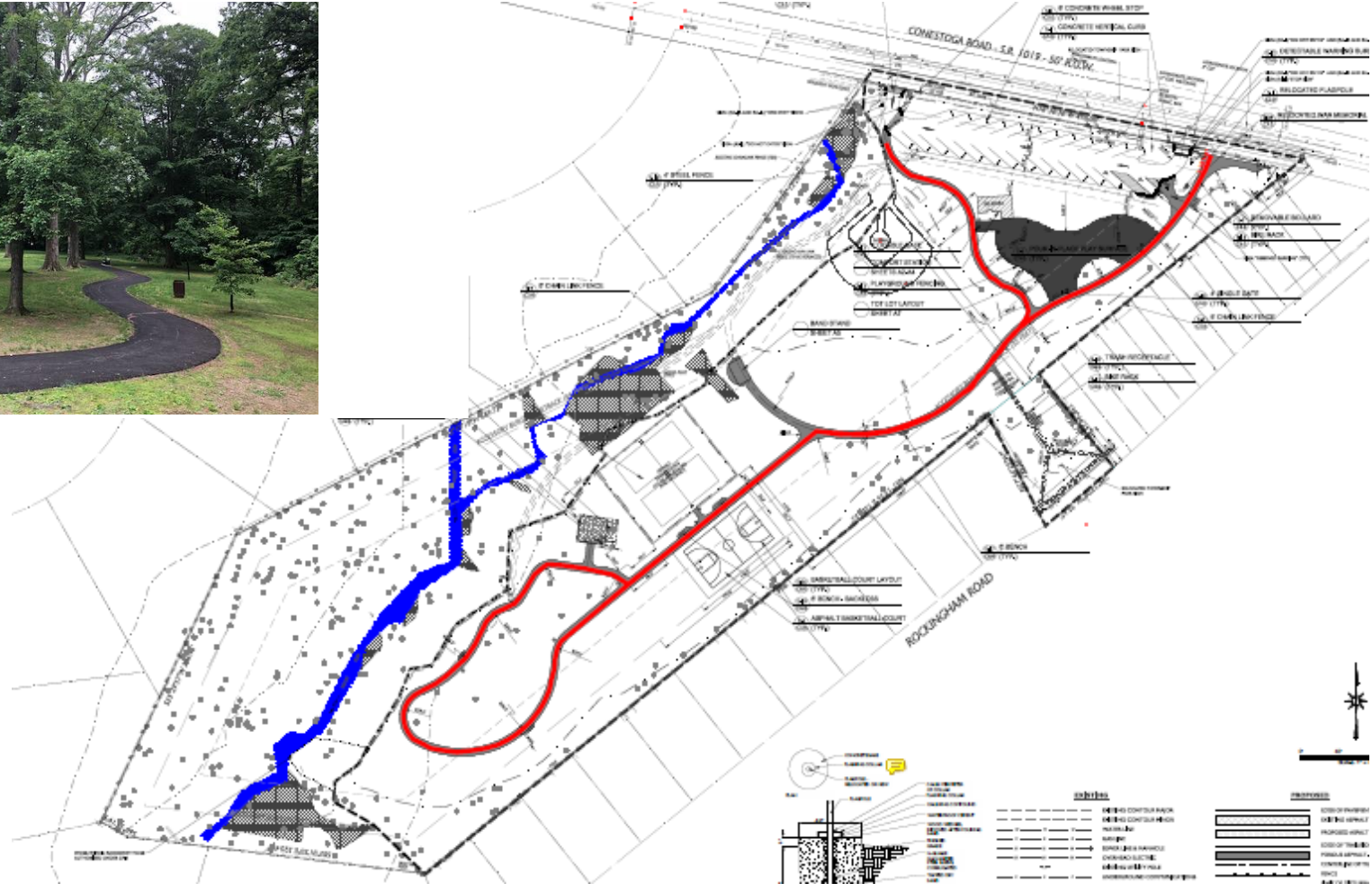
Basketball Court

A renovated basketball court now features fiberglass backboards!



New Walking Path Permeates the Park!

The walking path is approximately 2,260 feet or .4 miles if you walk the entire path! See red highlighted area below. The new walking path also allows you enjoy the entire linear footprint of the park including its tranquil, wooded area at the back of the park! Now you can experience the park from a whole new perspective and exercise at the same time!

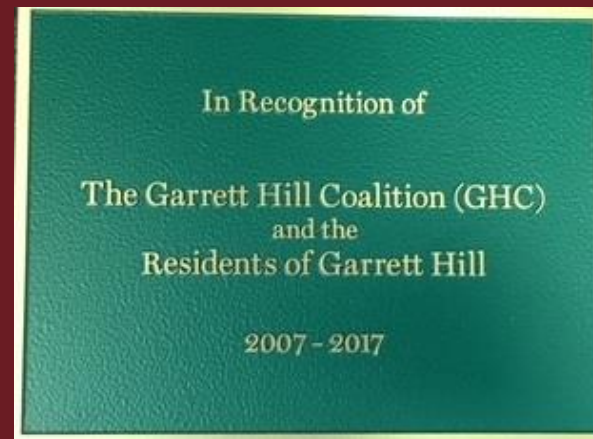


In Recognition of the Garrett Hill Coalition!

The Garrett Hill Coalition (GHC) is a civic association in the Garrett Hill section of Radnor Township. The GHC aims to monitor, facilitate, and support activities that will preserve and enhance Garrett Hill including the implementation of the Garrett Hill Master Plan.

The GHC was a dedicated and driving force in advocating for, and advancing the success, of the Clem Macrone Park Rehabilitation and Master Plan Implementation Project.

A mounted plaque adorns the park entrance to recognize the GHC for its remarkable efforts!



Features Three Rain Gardens!

Rehabilitation utilized green infrastructure in the form of bioretention, bio-swales, and three rain gardens to improve drainage through the site and filter run-off from adjacent developments before it enters Valley Run.



Porous Paving!

Porous paving surfaces were utilized in the construction of the new walking path to promote infiltration and reduce run-off.





Wetlands Project Maintenance!

The redirection and capturing of adjacent run-off allowed for more usable area of the park, therefore allowing an enhancement of the existing boardwalk through a wetland teaching area in the stream buffer of Valley Run. The riparian corridor along the stream and natural areas have been restored with native species to foster bio-diversity and it is being managed to control invasive plants.





Radnor Township

Clem Macrone Park

Rain Garden

A **Rain Garden** is a shallow depression that is designed to collect water runoff from a roof, sidewalk, driveway or other surface. A rain garden is not complete unless it is planted with **native plants**, which help to soak up water and remove pollutants.

A Rain Garden **helps the environment and you** by:

- Reducing the amount of watering and maintenance in your landscape.
- Reducing stormwater runoff and nutrient pollution.
- Reducing localized flooding and improving drainage.
- Enhancing infiltration to reduce flooding and promote groundwater recharge.
- Creating habitat for birds, bees, and other wildlife.



Rain Gardens provide a more natural approach to conventional stormwater management. A rain garden is most successful with native plants suited for both wet and dry conditions. This allows for a greater success rate of plants that thrive in the local climate. Consider installing a rain garden at your home or business to capture runoff and naturally treat the stormwater. Rain gardens offer a practical, beautiful way for individuals to contribute to our collective water quality efforts.

Great Strides in Environmental Education!

Existing interpretive, educational signage for the wetland features and stream improvements have been expanded as part of the project to include the bio-retention areas, green infrastructure, stormwater management, rain gardens, floodplain function and protection, forest health, and the sustainable and native plant communities.

Join us as we honor Radnor native Janice Grant Berenstain

Saturday, October 7, 2017

Rain Date: Saturday October 14th

At the Clem Macrone Park Playground at 11:00 AM

Join us as we honor Radnor Township and Rosemont native...Janice Grant Berenstain with a special recognition plaque!

Jan, along with her husband Stan, created the lovable "Berenstain Bears," among children's literature's most famous characters!

Fun children's activities to follow plaque dedication!

Berenstain Bears Book reading with Radnor Police

&

Anticipated Berenstain Bear character visit!



Janice Grant Berenstain
Radnor High School
Class of 1941



Born in 1923, Jan grew up on County Line Road in Rosemont. During World War II, Jan worked as a draftsman for the Army Corp of Engineers and as an aircraft riveter building the US Navy's PBV flying boat.

Carrying on the Berenstain tradition, Jan and Stan's two sons are also writers and illustrators of books for children.



While a student at Radnor High School, Jan was co-captain of the varsity field hockey team in her senior year and co-art editor of the senior yearbook, in which she did "Alice in Wonderland" pen and ink drawings (see right). She also used her artistic talent to make posters for school dances, sporting events, plays and concerts.

Brought to you by Radnor Township (610-688-5600) and Radnor Historical Society (610-688-2668)

Recognizing Janice Grant Berenstain, a Garrett Hill Native!



Recreational Programming & Community Events!

A variety of active and passive recreation takes place at the park year-round as it is suitable for a wide-range of outdoor pursuits including tennis, pickleball, basketball, baseball, soccer, family gatherings, picnicking, nature walks and more!

Staple Township community events take place each year at the park including the highly-regarded Garrett Hill 4th of July Parade and Picnic Celebration, Summer Concert, and the Garrett Hill Holiday Tree Lighting.



Garrett Hill Parade & Celebration Event!

July 4th isn't complete without the Garrett Hill Parade & Celebration Event!
2017 marked the 68th Annual – the GH Community's largest and longest-running
event and a staple event in the Radnor Township community!



Garrett Hill Holiday Tree Lighting!

Another Garrett Hill Tradition started in 2016 as a way to unite the community during the holiday season. The event is complete with holiday carols, decorating the massive tree, and a visit from Santa Claus!



Clem Macrone Park Receives DCNR Green Park Award!

In February 2018, Radnor Township was notified that it won the Pennsylvania Department of Conservation & Natural Resources and Pennsylvania Recreation & Parks Society's 2018 Green and Sustainable Park Award for its enormous strides in incorporating park-wide green and sustainable features through the Rehabilitation and Master Plan Implementation Project!



Green & Sustainable Park



THANK YOU TO EVERYONE FOR THEIR LEADERSHIP IN OUR PROJECT'S SUCCESS!

Radnor Township Board of Commissioners

Elaine P. Schaefer, Ward 4, Vice President

Richard F. Booker, Esq., Ward 2

Lucas A. Clark IV, Esq., Ward 3

Donald Curley, Ward 6

James C. Higgins, Esq., Ward 1

John C. Nagle, P.E., Ward 5

John E. Osborne - Treasurer

John Fisher, Ward 7 - Former Commissioner

Radnor Township Parks & Recreation Board

R. Andrew Santillo, Chair

Christopher Campbell, Vice Chair

Patrick Gillian

Clare Girton

Mary Coe

Jim Doyle

William Remphrey

Charles Madden

Susan Michaelson

James Schwartz - Former Chair

Thank you to the Residents of Garrett Hill and all of the neighborhoods of Radnor Township who developed the park plan!

Garrett Hill Organizations

Patti Barker - Garrett Hill Coalition/Garrett Hill Executive Committee Chair

Kim Crews-Engelhard - 4th of July Parade Committee

Bob Adams - Bryn Rose Civic Association

Thank you for grants that helped make this project possible!

PA Dept. of Conservation and Natural Resources (DCNR)

PA Dept. of Community and Economic Development (DCED)

PECO Energy

Thank you to the members of the Radnor Township Public Works Department for their gallant efforts and leadership in finishing the Clem Macrone Project!

Radnor Township Administration

Robert Zienkowski - Township Manager

William A. White, MBA - Director of Finance/Asst. Township Manager

William A. Colarulo - Superintendent of Police

Stephen Norcini - Director of Engineering

Tammy Cohen - Director of Recreation & Community Programming

Kevin W. Kochanski, RLA, CZO - Director of Community Development

Steve McNelis - Interim Director of Public Works

Mark Domenick - Interim Director of Public Works

Heather DiCanzio - Recreation Program Supervisor

Tracey Hardos - Recreation Program Coordinator

Clem Macrone Park: A Park for Everyone!

810 Conestoga Road, Bryn Mawr 9.4 acres, Ward 7

The land for Clem Macrone Park was purchased in 1958 for inclusion in the Township's park system. The initial construction of the many amenities featured at the park was completed in 1968. First referred to as Rosemont Park, Clem Macrone Park was dedicated in 1991 to honor Clem Macrone, a woman active in the community and whose property abutted the park. She would allow neighborhood children to access the park through her backyard as her home bordered the park and she would often host community picnics there. She loved the community and the children who used the park and renaming it was a way to honor her local contributions.



www.radnor.com/cmpproject