

# Radnor Township

***CLEM MACRONE PARK - Rehabilitation & Master Plan Implementation***

***GRAND RE-OPENING EVENT***

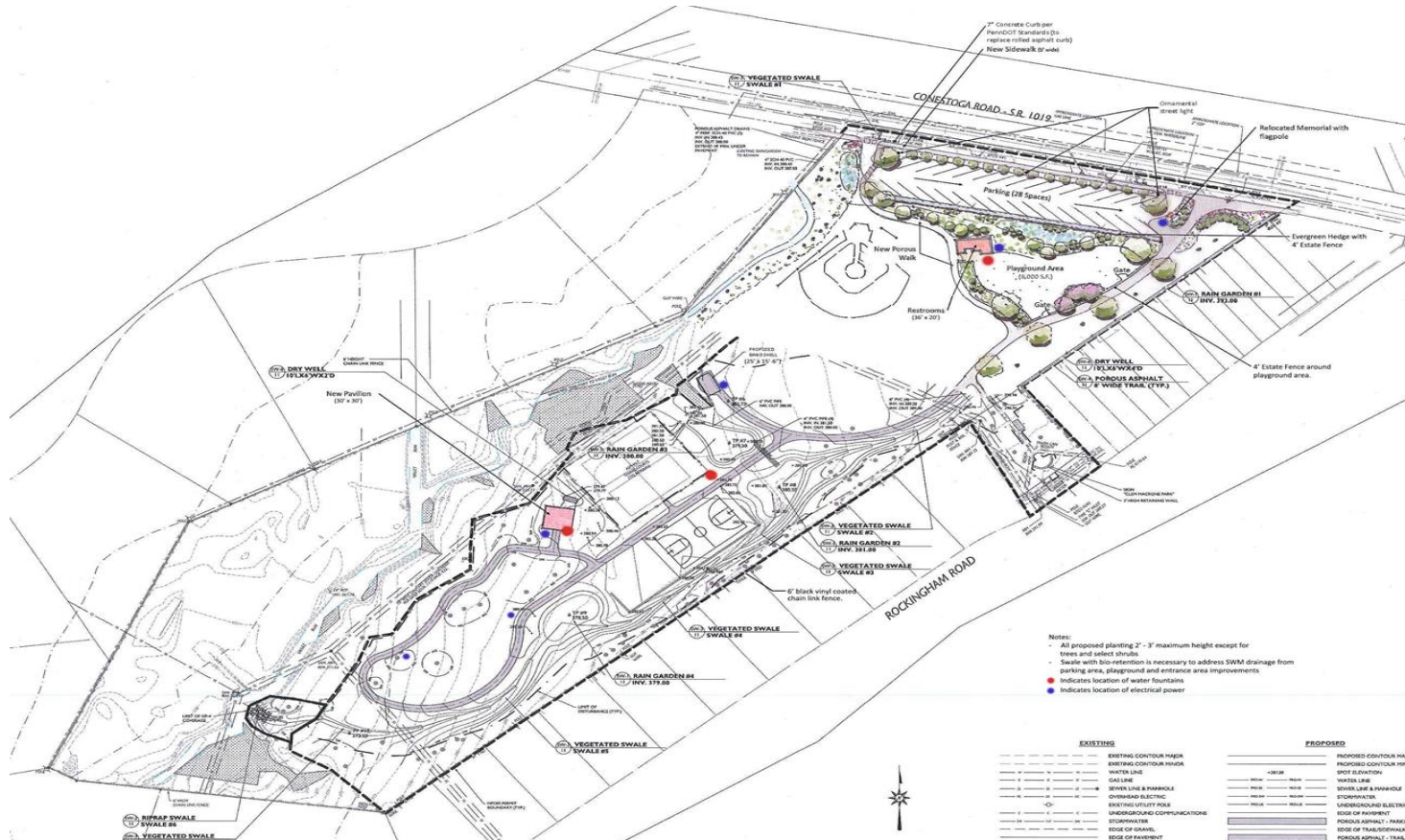
***Saturday, September 9, 2017***



# Radnor Township

## CLEM MACRONE PARK - Rehabilitation & Master Plan Implementation

Features of new and improved amenities retain and capture the park's active and passive features and incorporate sustainable features throughout the entire park! Playground, Pavilion, Band Shell, Comfort Station, War Memorial, Walking Path, Basketball and Tennis Courts, & More!



## *Features Three Rain Gardens!*

Rehabilitation utilized green infrastructure in the form of bioretention, bio-swales, and three rain gardens to improve drainage through the site and filter run-off from adjacent developments before it enters Valley Run.



## *Porous Paving!*

Porous paving surfaces were utilized in the reconstruction of the parking lot and for the new walking trails to promote infiltration and reduce run-off.



# Great Strides in Environmental Education!

Existing interpretive, educational signage for the wetland features and stream improvements have been expanded as part of the project to include the bio-retention areas, green infrastructure, stormwater management, rain gardens, floodplain function and protection, forest health, and the sustainable and native plant communities.



Radnor  Township

## Clem Macrone Park

### Rain Garden

A **Rain Garden** is a shallow depression that is designed to collect water runoff from a roof, sidewalk, driveway or other surface. A rain garden is not complete unless it is planted with **native plants**, which help to soak up water and remove pollutants.

A Rain Garden **helps the environment and you** by:

- Reducing the amount of watering and maintenance in your landscape.
- Reducing stormwater runoff and nutrient pollution.
- Reducing localized flooding and improving drainage.
- Enhancing infiltration to reduce flooding and promote groundwater recharge.
- Creating habitat for birds, bees, and other wildlife.



Rain Gardens provide a more natural approach to conventional stormwater management. A rain garden is most successful with native plants suited for both wet and dry conditions. This allows for a greater success rate of plants that thrive in the local climate. Consider installing a rain garden at your home or business to capture runoff and naturally treat the stormwater. Rain gardens offer a practical, beautiful way for individuals to contribute to our collective water quality efforts.



***Wetlands Project Maintenance!***

The redirection and capturing of adjacent run-off allowed for more usable area of the park, therefore allowing an enhancement of the existing boardwalk through a wetland teaching area in the stream buffer of Valley Run. The riparian corridor along the stream and natural areas have been restored with native species to foster bio-diversity and it is being managed to control invasive plants.